

Product datasheet for **TA329230**

Atf3 Rabbit Polyclonal Antibody

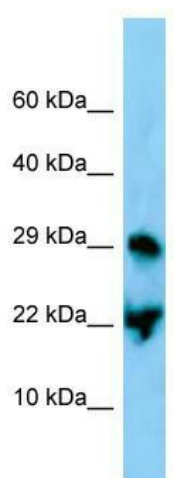
Product data:

Product Type:	Primary Antibodies
Applications:	WB
Recommended Dilution:	WB
Reactivity:	Mouse
Host:	Rabbit
Isotype:	IgG
Clonality:	Polyclonal
Immunogen:	The immunogen for Anti-Atf3 antibody is: synthetic peptide directed towards the C-terminal region of Mouse Atf3. Synthetic peptide located within the following region: ESVNAELKAQIEELKNEKQHLYMLNLHRPTCIVRAQNGRTPEDERNLFI
Formulation:	Liquid. Purified antibody supplied in 1x PBS buffer with 0.09% (w/v) sodium azide and 2% sucrose. <i>Note that this product is shipped as lyophilized powder to China customers.</i>
Conjugation:	Unconjugated
Storage:	Store at -20°C as received.
Stability:	Stable for 12 months from date of receipt.
Predicted Protein Size:	21 kDa
Gene Name:	activating transcription factor 3
Database Link:	NP_031524 Entrez Gene 11910 Mouse Q60765
Background:	This protein binds the cAMP response element (CRE) (consensus: 5'-GTGACGT[AC][AG]-3'), a sequence present in many viral and cellular promoters. Represses transcription from promoters with ATF sites. It may repress transcription by stabilizing the binding of inhibitory cofactors at the promoter.
Synonyms:	ATF3deltaZip2; ATF3deltaZip2c; ATF3deltaZip3; OTTHUMP00000034890
Note:	Immunogen sequence homology: Dog: 100%; Pig: 100%; Rat: 100%; Horse: 100%; Human: 100%; Mouse: 100%; Bovine: 100%; Rabbit: 100%; Guinea pig: 100%; Zebrafish: 79%



[View online »](#)

Product images:



WB Suggested Anti-Atf3 Antibody; Titration: 1.0 ug/ml; Positive Control: Mouse Stomach