

Product datasheet for **TA329228**

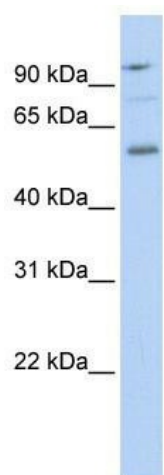
TEF1 (TEAD1) Rabbit Polyclonal Antibody

Product data:

Product Type:	Primary Antibodies
Applications:	WB
Recommended Dilution:	WB
Reactivity:	Human
Host:	Rabbit
Isotype:	IgG
Clonality:	Polyclonal
Immunogen:	The immunogen for anti-TEAD1 antibody: synthetic peptide directed towards the middle region of human TEAD1. Synthetic peptide located within the following region: PASAPAPSVPAWQGRSIGTTKLRLVEFSAFLEQQRDPDSYNKHLFVHIGH
Formulation:	Liquid. Purified antibody supplied in 1x PBS buffer with 0.09% (w/v) sodium azide and 2% sucrose. <i>Note that this product is shipped as lyophilized powder to China customers.</i>
Conjugation:	Unconjugated
Storage:	Store at -20°C as received.
Stability:	Stable for 12 months from date of receipt.
Predicted Protein Size:	46 kDa
Gene Name:	TEA domain transcription factor 1
Database Link:	NP_068780 Entrez Gene 7003 Human P28347
Background:	TEAD1 is a transcriptional enhancer. It interacts with a muscle-specific cofactor to promote skeletal muscle gene expression. The mutation in the TEAD1 gene is the cause of Sveinsson's chorioretinal atrophy.
Synonyms:	AA; NTEF-1; REF1; TCF-13; TCF13; TEAD-1; TEF-1
Note:	Immunogen sequence homology: Dog: 100%; Pig: 100%; Rat: 100%; Horse: 100%; Human: 100%; Mouse: 100%; Bovine: 100%; Rabbit: 100%; Guinea pig: 100%; Zebrafish: 93%
Protein Families:	Transcription Factors



[View online »](#)

Product images:

WB Suggested Anti-TEAD1 Antibody Titration: 0.2-1 ug/ml; ELISA Titer: 1:312500; Positive Control: HeLa cell lysate TEAD1 is supported by BioGPS gene expression data to be expressed in HeLa