

Product datasheet for **TA329226**

ELK4 Rabbit Polyclonal Antibody

Product data:

Product Type:	Primary Antibodies
Applications:	WB
Recommended Dilution:	WB
Reactivity:	Human
Host:	Rabbit
Isotype:	IgG
Clonality:	Polyclonal
Immunogen:	The immunogen for anti-ELK4 antibody: synthetic peptide directed towards the C terminal of human ELK4. Synthetic peptide located within the following region: ASLTPAFFSQVACSLFMVSPLLSFICPFKQIQONLYTQVCFLLLRFLERL
Formulation:	Liquid. Purified antibody supplied in 1x PBS buffer with 0.09% (w/v) sodium azide and 2% sucrose. <i>Note that this product is shipped as lyophilized powder to China customers.</i>
Conjugation:	Unconjugated
Storage:	Store at -20°C as received.
Stability:	Stable for 12 months from date of receipt.
Predicted Protein Size:	45 kDa
Gene Name:	ELK4, ETS transcription factor
Database Link:	NP_068567 Entrez Gene 2005 Human P28324
Background:	The ELK4 gene is a member of the Ets family of transcription factors and of the ternary complex factor (TCF) subfamily. Proteins of the TCF subfamily form a ternary complex by binding to the the serum response factor and the serum response element in the promoter of the c-fos proto-oncogene. The protein encoded by ELK4 is phosphorylated by the kinases, MAPK1 and MAPK8.
Synonyms:	SAP1
Note:	Immunogen sequence homology: Human: 100%

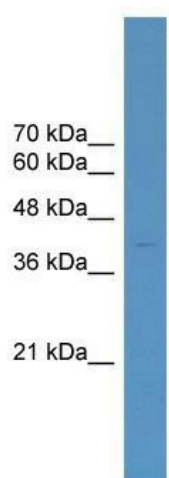


[View online »](#)

Protein Families: Druggable Genome, Transcription Factors

Protein Pathways: MAPK signaling pathway

Product images:



WB Suggested Anti-ELK4 Antibody Titration: 0.2-1 ug/ml; ELISA Titer: 1:312500; Positive Control: 721_B cell lysate. ELK4 is strongly supported by BioGPS gene expression data to be expressed in Human 721_B cells