

## Product datasheet for **TA329220**

### Nfe2 Rabbit Polyclonal Antibody

#### Product data:

Product Type:	Primary Antibodies
Applications:	WB
Recommended Dilution:	WB
Reactivity:	Mouse
Host:	Rabbit
Isotype:	IgG
Clonality:	Polyclonal
Immunogen:	The immunogen for Anti-Nfe2 antibody is: synthetic peptide directed towards the C-terminal region of MOUSE Nfe2. Synthetic peptide located within the following region: ARGEADRTLEVMRQQLAELYHDIFQHLRDESGNSYSPEEYVLQQAADGAI
Formulation:	Liquid. Purified antibody supplied in 1x PBS buffer with 0.09% (w/v) sodium azide and 2% sucrose. <i>Note that this product is shipped as lyophilized powder to China customers.</i>
Purification:	Affinity Purified
Conjugation:	Unconjugated
Storage:	Store at -20°C as received.
Stability:	Stable for 12 months from date of receipt.
Predicted Protein Size:	41 kDa
Gene Name:	nuclear factor, erythroid derived 2
Database Link:	<a href="#">NP_032711</a> <a href="#">Entrez Gene 18022 Mouse Q07279</a>



[View online »](#)

**Background:**

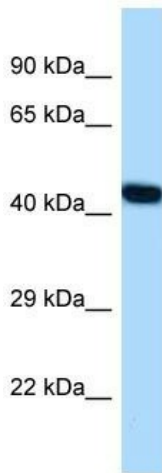
Nfe2 is a component of the NF-E2 complex essential for regulating erythroid and megakaryocytic maturation and differentiation. It binds to the hypersensitive site 2 (HS2) of the beta-globin control region (LCR). This subunit (NFE2) recognizes the TCAT/C sequence of the AP-1-like core palindrome present in a number of erythroid and megakaryocytic gene promoters. It requires MAFK or other small MAF proteins for binding to the NF-E2 motif. It may play a role in all aspects of hemoglobin production from globin and heme synthesis to procurement of iron.

**Synonyms:**

NF-E2; p45

**Note:**

Immunogen sequence homology: Human: 100%; Dog: 93%; Pig: 93%; Rat: 93%; Mouse: 93%; Rabbit: 93%; Guinea pig: 93%; Bovine: 86%; Horse: 79%

**Product images:**

Host: Rabbit

Target Name: Nfe2

Sample Tissue: Mouse Heart Lysate

Antibody Dilution: 1.0µg/ml

Host: Rabbit; Target Name: Nfe2; Sample Tissue: Mouse Heart lysates; Antibody Dilution: 1.0ug/ml