

Product datasheet for **TA329219**

MITF Rabbit Polyclonal Antibody

Product data:

Product Type:	Primary Antibodies
Applications:	WB
Recommended Dilution:	WB
Reactivity:	Human
Host:	Rabbit
Isotype:	IgG
Clonality:	Polyclonal
Immunogen:	The immunogen for Anti-MITF antibody is: synthetic peptide directed towards the middle region of Human MITF. Synthetic peptide located within the following region: NSNCEKEGFYKFEEQNRAESECPGMNTHSRASCMQMDDVIDDIISLESSY
Formulation:	Liquid. Purified antibody supplied in 1x PBS buffer with 0.09% (w/v) sodium azide and 2% sucrose. <i>Note that this product is shipped as lyophilized powder to China customers.</i>
Purification:	Affinity Purified
Conjugation:	Unconjugated
Storage:	Store at -20°C as received.
Stability:	Stable for 12 months from date of receipt.
Predicted Protein Size:	39 kDa
Gene Name:	melanogenesis associated transcription factor
Database Link:	NP_937821 Entrez Gene 4286 Human O75030
Background:	MITF is a transcription factor that contains both basic helix-loop-helix and leucine zipper structural features. It regulates the differentiation and development of melanocytes retinal pigment epithelium and is also responsible for pigment cell-specific transcription of the melanogenesis enzyme genes. Heterozygous mutations in the this gene cause auditory-pigmentary syndromes, such as Waardenburg syndrome type 2 and Tietz syndrome. Alternatively spliced transcript variants encoding different isoforms have been identified.



[View online »](#)

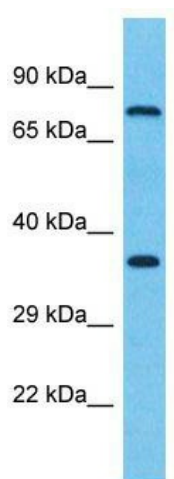
Synonyms: bHLHe32; CMM8; MI; WS2; WS2A

Note: Immunogen sequence homology: Dog: 100%; Pig: 100%; Rat: 100%; Horse: 100%; Human: 100%; Sheep: 100%; Bovine: 100%; Rabbit: 100%; Guinea pig: 100%; Mouse: 92%

Protein Families: Druggable Genome, Transcription Factors

Protein Pathways: Melanogenesis, Melanoma, Pathways in cancer

Product images:



Host: Rabbit; Target Name: MITF; Sample Tissue: Esophagus Tumor lysates; Antibody Dilution: 1.0ug/ml