

Product datasheet for TA329218

Nfe2l1 Rabbit Polyclonal Antibody

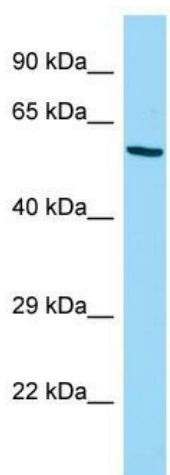
Product data:

Product Type:	Primary Antibodies
Applications:	WB
Recommended Dilution:	WB
Reactivity:	Mouse
Host:	Rabbit
Isotype:	IgG
Clonality:	Polyclonal
Immunogen:	The immunogen for Anti-Nfe2l1 antibody is: synthetic peptide directed towards the C-terminal region of MOUSE Nfe2l1. Synthetic peptide located within the following region: EVFGRLRDEHGRPYSPSQYALQYAGDGSVLLIPRTMADQQARRQERKPKD
Formulation:	Liquid. Purified antibody supplied in 1x PBS buffer with 0.09% (w/v) sodium azide and 2% sucrose. <i>Note that this product is shipped as lyophilized powder to China customers.</i>
Purification:	Affinity Purified
Conjugation:	Unconjugated
Storage:	Store at -20°C as received.
Stability:	Stable for 12 months from date of receipt.
Predicted Protein Size:	49 kDa
Gene Name:	nuclear factor, erythroid derived 2,-like 1
Database Link:	NP_032712 Entrez Gene 18023 Mouse Q61985
Background:	This gene encodes a protein that is involved in globin gene expression in erythrocytes. Confusion has occurred in bibliographic databases from the use of NRF1 for this gene, NFE2L1, and for 'nuclear respiratory factor 1' which has an official symbol of NRF1.
Synonyms:	FLJ00380; HBZ17; LCR-F1; NRF1; TCF11
Note:	Immunogen sequence homology: Dog: 100%; Rat: 100%; Human: 100%; Bovine: 100%; Rabbit: 100%; Mouse: 93%; Pig: 86%; Horse: 86%; Guinea pig: 86%



[View online »](#)

Product images:



Host: Rabbit
Target Name: Nfe2l1
Sample Tissue: Mouse Testis Lysate
Antibody Dilution: 1.0 μ g/ml

Host: Rabbit; Target Name: Nfe2l1; Sample
Tissue: Mouse Testis lysates; Antibody Dilution:
1.0ug/ml