

## Product datasheet for TA329214

### Gabpa Rabbit Polyclonal Antibody

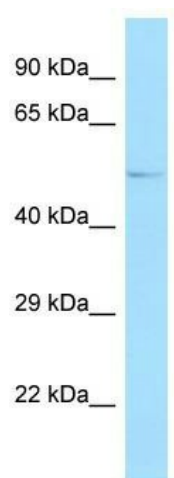
#### Product data:

Product Type:	Primary Antibodies
Applications:	WB
Recommended Dilution:	WB
Reactivity:	Human, Mouse
Host:	Rabbit
Isotype:	IgG
Clonality:	Polyclonal
Immunogen:	The immunogen for Anti-Gabpa antibody is: synthetic peptide directed towards the N-terminal region of Mouse Gabpa. Synthetic peptide located within the following region: MTKREAELIEIEIDGTEKAECTEESIVEQTYTPAECVSQAIDINEPIGN
Formulation:	Liquid. Purified antibody supplied in 1x PBS buffer with 0.09% (w/v) sodium azide and 2% sucrose. <i>Note that this product is shipped as lyophilized powder to China customers.</i>
Conjugation:	Unconjugated
Storage:	Store at -20°C as received.
Stability:	Stable for 12 months from date of receipt.
Predicted Protein Size:	51 kDa
Gene Name:	GA repeat binding protein, alpha
Database Link:	<a href="#">NP_032091</a> <a href="#">Entrez Gene 14390 Mouse Q00422</a>
Background:	Gabpa is a transcription factor capable of interacting with purine rich repeats (GA repeats).
Synonyms:	E4TF1-60; E4TF1A; NFT2; NRF2; NRF2A; OTTHUMP00000096114
Note:	Immunogen sequence homology: Dog: 100%; Pig: 100%; Rat: 100%; Horse: 100%; Human: 100%; Mouse: 100%; Bovine: 100%; Rabbit: 100%; Guinea pig: 100%



[View online »](#)

## Product images:



Host: Rabbit; Target Name: Gabpa; Sample  
Tissue: Mouse Lung lysates; Antibody Dilution:  
1.0ug/ml