

## Product datasheet for **TA329212**

### E2F4 Rabbit Polyclonal Antibody

#### Product data:

Product Type:	Primary Antibodies
Applications:	IHC, WB
Recommended Dilution:	WB, IHC
Reactivity:	Human
Host:	Rabbit
Isotype:	IgG
Clonality:	Polyclonal
Immunogen:	The immunogen for anti-E2F4 antibody: synthetic peptide directed towards the C terminal of human E2F4. Synthetic peptide located within the following region: SSELLEELMSSEVFAPLLRLSPPPGDHDYIYNLDESEGVCDFDVPVLNL
Formulation:	Liquid. Purified antibody supplied in 1x PBS buffer with 0.09% (w/v) sodium azide and 2% sucrose. <i>Note that this product is shipped as lyophilized powder to China customers.</i>
Conjugation:	Unconjugated
Storage:	Store at -20°C as received.
Stability:	Stable for 12 months from date of receipt.
Predicted Protein Size:	44 kDa
Gene Name:	E2F transcription factor 4
Database Link:	<a href="#">NP_001941</a> <a href="#">Entrez Gene 1874 Human</a> <a href="#">Q16254</a>



[View online »](#)

**Background:**

The protein encoded by this gene is a member of the E2F family of transcription factors. The E2F family plays a crucial role in the control of cell cycle and action of tumor suppressor proteins. It is also a target of the transforming proteins of small DNA tumor viruses. The E2F proteins contain several evolutionally conserved domains found in most members of the family. These domains include a DNA binding domain, a dimerization domain which determines interaction with the differentiation regulated transcription factor proteins (DP), a transactivation domain enriched in acidic amino acids, and a tumor suppressor protein association domain which is embedded within the transactivation domain. This protein binds to all three of the tumor suppressor proteins pRB, p107 and p130, but with higher affinity to the last two. It also plays an important role in the suppression of proliferation-associated genes, and its gene mutation and increased expression may be associated with human cancer.

**Synonyms:**

E2F-4

**Note:**

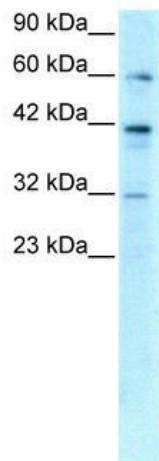
Immunogen sequence homology: Dog: 100%; Pig: 100%; Rat: 100%; Horse: 100%; Human: 100%; Mouse: 100%; Bovine: 100%; Rabbit: 100%; Zebrafish: 100%; Guinea pig: 100%

**Protein Families:**

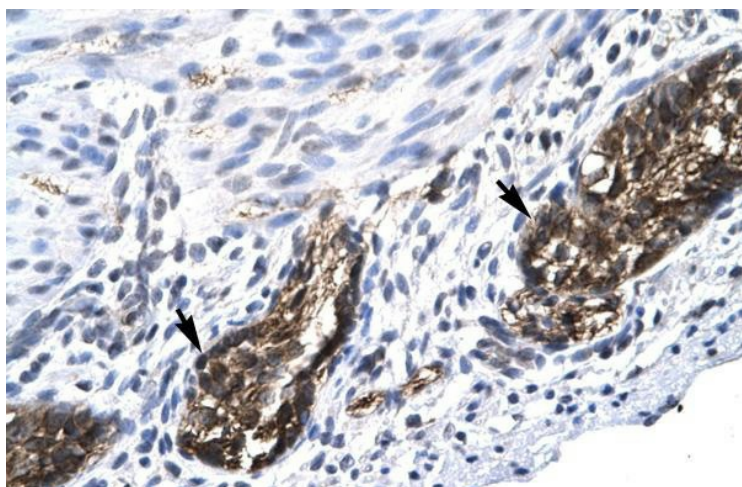
Druggable Genome, Transcription Factors

**Protein Pathways:**

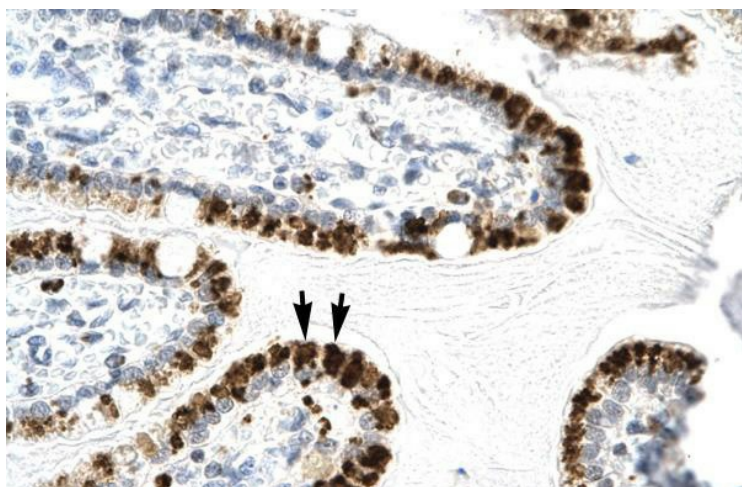
Cell cycle, TGF-beta signaling pathway

**Product images:**

WB Suggested Anti-E2F4 Antibody Titration: 0.2-1 ug/ml; ELISA Titer: 1:312500; Positive Control: HepG2 cell lysate



Human Stomach



Human Intestine