

Product datasheet for **TA329210**

RFX3 Rabbit Polyclonal Antibody

Product data:

Product Type:	Primary Antibodies
Applications:	WB
Recommended Dilution:	WB
Reactivity:	Human
Host:	Rabbit
Isotype:	IgG
Clonality:	Polyclonal
Immunogen:	The immunogen for Anti-RFX3 antibody is: synthetic peptide directed towards the N-terminal region of Human RFX3. Synthetic peptide located within the following region: MQTSETGSDTGSTVTLQTSVASQAAVPTQVVQQVPVQQVQQVQTVQQVQ
Formulation:	Liquid. Purified antibody supplied in 1x PBS buffer with 0.09% (w/v) sodium azide and 2% sucrose. <i>Note that this product is shipped as lyophilized powder to China customers.</i>
Purification:	Affinity Purified
Conjugation:	Unconjugated
Storage:	Store at -20°C as received.
Stability:	Stable for 12 months from date of receipt.
Predicted Protein Size:	45 kDa
Gene Name:	regulatory factor X3
Database Link:	NP_602304 Entrez Gene 5991 Human P48380
Background:	This gene is a member of the regulatory factor X gene family, which encodes transcription factors that contain a highly-conserved winged helix DNA binding domain. The protein encoded by this gene is structurally related to regulatory factors X1, X2, X4, and X5. It is a transcriptional activator that can bind DNA as a monomer or as a heterodimer with other RFX family members. Multiple transcript variants encoding different isoforms have been described for this gene.



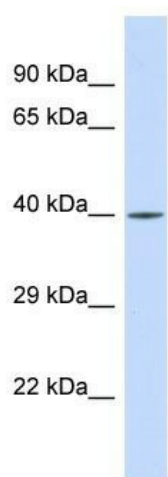
[View online »](#)

Synonyms: bA32F11.1

Note: Immunogen sequence homology: Dog: 100%; Pig: 100%; Rat: 100%; Horse: 100%; Human: 100%; Mouse: 100%; Rabbit: 100%

Protein Families: Transcription Factors

Product images:



Host: Rabbit
Target Name: RFX3
Sample Tissue: Hela Cell Lysate
Antibody Dilution: 1.0 μ g/ml

Host: Rabbit; Target Name: RFX3; Sample Tissue: Hela Whole Cell lysates; Antibody Dilution: 1.0ug/ml