

Product datasheet for **TA329209**

RBPJK (RBPJ) Rabbit Polyclonal Antibody

Product data:

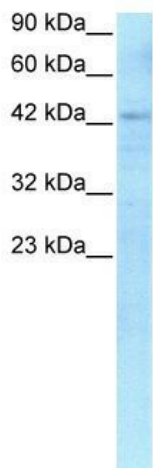
Product Type:	Primary Antibodies
Applications:	IHC, IP, WB
Recommended Dilution:	IP, WB, IHC
Reactivity:	Human, Mouse
Host:	Rabbit
Isotype:	IgG
Clonality:	Polyclonal
Immunogen:	The immunogen for anti-RBPSUH antibody: synthetic peptide directed towards the C terminal of human RBPSUH. Synthetic peptide located within the following region: RPHCSAAGAILRANSSQVPPNESNTNSEGSYTNASTNSTSVTSSTATVVS
Formulation:	Liquid. Purified antibody supplied in 1x PBS buffer with 0.09% (w/v) sodium azide and 2% sucrose. <i>Note that this product is shipped as lyophilized powder to China customers.</i>
Conjugation:	Unconjugated
Storage:	Store at -20°C as received.
Stability:	Stable for 12 months from date of receipt.
Predicted Protein Size:	56 kDa
Gene Name:	recombination signal binding protein for immunoglobulin kappa J region
Database Link:	NP_976028 Entrez Gene 19664 Mouse Entrez Gene 3516 Human Q06330
Background:	RBPSUH is a DNA binding protein that activates a full transcriptional response but only demonstrates partial anti-apoptotic activity. RTA-mediated redirection of RBPSUH activity from repression to activation is critical for lytic viral replication.
Synonyms:	AOS3; CBF1; csl; IGKJRB; IGKJRB1; KBF2; RBP-J; RBPJK; RBPSUH; SUH
Note:	Immunogen sequence homology: Dog: 100%; Pig: 100%; Rat: 100%; Horse: 100%; Human: 100%; Bovine: 100%; Rabbit: 100%; Guinea pig: 100%; Mouse: 93%
Protein Families:	Transcription Factors



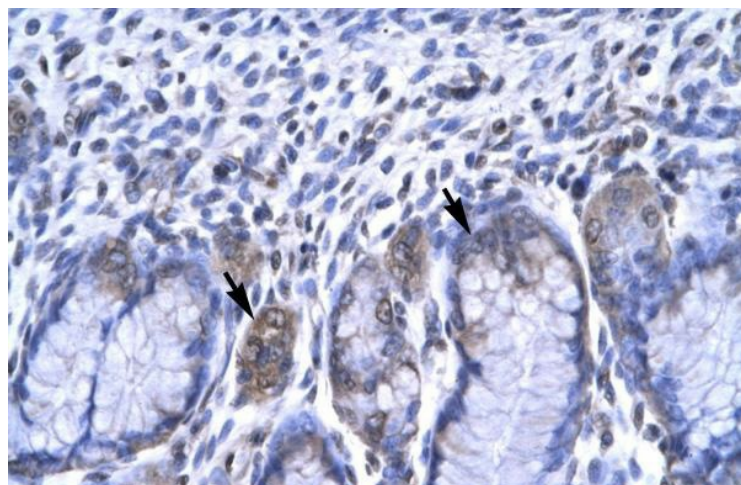
[View online »](#)

Protein Pathways: Notch signaling pathway

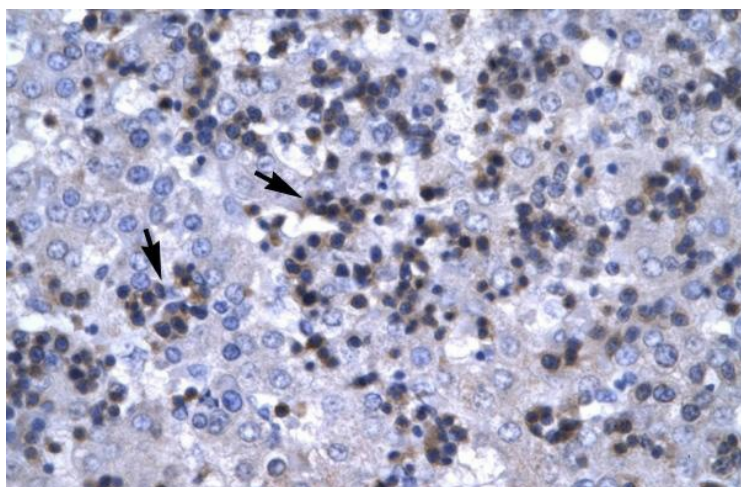
Product images:



WB Suggested Anti-RBPSUH Antibody Titration:
0.2-1 ug/ml; ELISA Titer: 1:312500; Positive
Control: HepG2 cell lysate

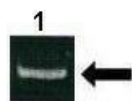


Human Stomach



Human Liver

RBPSUH



K562

[See IP 1 Data and Customer Feedback for more Information](#)