

Product datasheet for **TA329208**

HNF1 alpha (HNF1A) Rabbit Polyclonal Antibody

Product data:

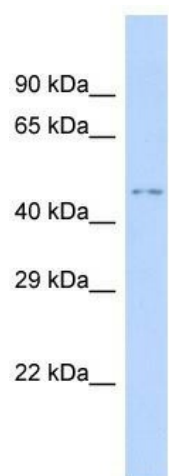
Product Type:	Primary Antibodies
Applications:	WB
Recommended Dilution:	WB
Reactivity:	Human
Host:	Rabbit
Isotype:	IgG
Clonality:	Polyclonal
Immunogen:	The immunogen for Anti-HNF1A antibody is: synthetic peptide directed towards the C-terminal region of Human HNF1A. Synthetic peptide located within the following region: QTMLITDTTNLSALASLTPTKQVFTSDTEASSESGLHTPASQATTLHVPS
Formulation:	Liquid. Purified antibody supplied in 1x PBS buffer with 0.09% (w/v) sodium azide and 2% sucrose. <i>Note that this product is shipped as lyophilized powder to China customers.</i>
Purification:	Affinity Purified
Conjugation:	Unconjugated
Storage:	Store at -20°C as received.
Stability:	Stable for 12 months from date of receipt.
Predicted Protein Size:	49 kDa
Gene Name:	HNF1 homeobox A
Database Link:	NP_000536 Entrez Gene 6927 Human P20823
Background:	The function of this protein remains unknown.
Synonyms:	HNF-1A; HNF1; IDDM20; LFB1; MODY3; TCF-1; TCF1
Note:	Immunogen sequence homology: Dog: 100%; Pig: 100%; Rat: 100%; Horse: 100%; Human: 100%; Bovine: 100%; Guinea pig: 100%; Mouse: 85%
Protein Families:	Adult stem cells, Druggable Genome, ES Cell Differentiation/IPS, Transcription Factors



[View online »](#)

Protein Pathways: Maturity onset diabetes of the young

Product images:



Host: Rabbit; Target Name: HNF1A; Sample
Tissue: 293T Whole Cell lysates; Antibody
Dilution: 1.0ug/ml