

Product datasheet for **TA329207**

E74 like factor 1 (ELF1) Rabbit Polyclonal Antibody

Product data:

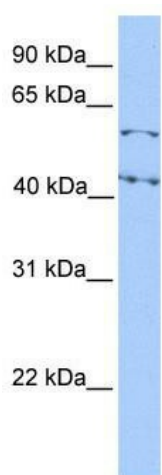
Product Type:	Primary Antibodies
Applications:	IHC, WB
Recommended Dilution:	WB, IHC
Reactivity:	Human
Host:	Rabbit
Isotype:	IgG
Clonality:	Polyclonal
Immunogen:	The immunogen for anti-ELF1 antibody: synthetic peptide directed towards the N terminal of human ELF1. Synthetic peptide located within the following region: VTLDGIPEVMETQQVQEKYADSPGASSPEQPKRKKGRKTKPPRPDSPATT
Formulation:	Liquid. Purified antibody supplied in 1x PBS buffer with 0.09% (w/v) sodium azide and 2% sucrose. <i>Note that this product is shipped as lyophilized powder to China customers.</i>
Conjugation:	Unconjugated
Storage:	Store at -20°C as received.
Stability:	Stable for 12 months from date of receipt.
Predicted Protein Size:	67 kDa
Gene Name:	E74 like ETS transcription factor 1
Database Link:	NP_001138825 Entrez Gene 1997 Human P32519
Background:	ELF1 belongs to the ETS family. It contains 1 ETS DNA-binding domain. ELF1 is a transcription factor that activates the LYN and BLK promoters. It appears to be required for the T-cell-receptor-mediated trans activation of HIV-2 gene expression. ELF1 binds specifically to two purine-rich motifs in the HIV-2 enhancer.
Synonyms:	E74-like factor 1 (ets domain transcription factor); OTTHUMP00000018310
Note:	Immunogen sequence homology: Dog: 100%; Pig: 100%; Rat: 100%; Horse: 100%; Human: 100%; Bovine: 100%; Rabbit: 100%; Guinea pig: 100%; Mouse: 93%



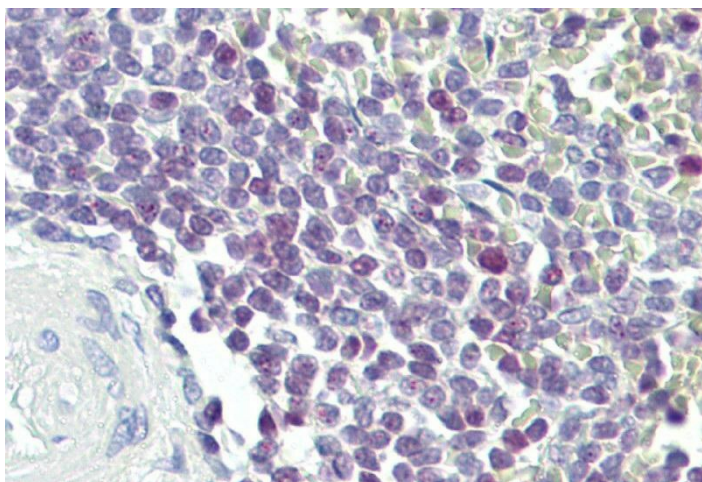
[View online »](#)

Protein Families: Transcription Factors

Product images:



WB Suggested Anti-ELF1 Antibody Titration: 0.2-1 ug/ml; ELISA Titer: 1:1562500; Positive Control: HeLa cell lysate



Spleen