

## Product datasheet for **TA329206**

### Ctcf Rabbit Polyclonal Antibody

#### Product data:

Product Type:	Primary Antibodies
Applications:	WB
Recommended Dilution:	WB
Reactivity:	Mouse
Host:	Rabbit
Isotype:	IgG
Clonality:	Polyclonal
Immunogen:	The immunogen for Anti-CTCF antibody is: synthetic peptide directed towards the C-terminal region of Human CTCF. Synthetic peptide located within the following region: HADNCAGPDGVEGENGGGETKKSQRGRKMRSKKEDSSDSENAEPDLDN
Formulation:	Liquid. Purified antibody supplied in 1x PBS buffer with 0.09% (w/v) sodium azide and 2% sucrose. <i>Note that this product is shipped as lyophilized powder to China customers.</i>
Conjugation:	Unconjugated
Storage:	Store at -20°C as received.
Stability:	Stable for 12 months from date of receipt.
Predicted Protein Size:	83 kDa
Gene Name:	CCCTC-binding factor
Database Link:	<a href="#">Entrez Gene 13018 Mouse Q61164</a>



[View online »](#)

**Background:**

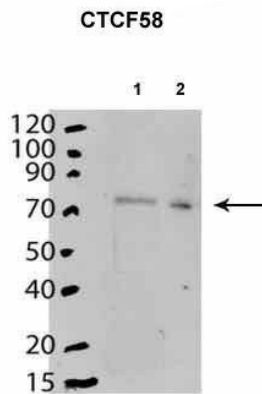
This gene is a member of the BORIS + CTCF gene family and encodes a transcriptional regulator protein with 11 highly conserved zinc finger (ZF) domains. This nuclear protein is able to use different combinations of the ZF domains to bind different DNA target sequences and proteins. Depending upon the context of the site, the protein can bind a histone acetyltransferase (HAT)-containing complex and function as a transcriptional activator or bind a histone deacetylase (HDAC)-containing complex and function as a transcriptional repressor. If the protein is bound to a transcriptional insulator element, it can block communication between enhancers and upstream promoters, thereby regulating imprinted expression. Mutations in this gene have been associated with invasive breast cancers, prostate cancers, and Wilms' tumors.

**Synonyms:**

CTCF

**Note:**

Immunogen sequence homology: Pig: 100%; Rat: 100%; Human: 100%; Mouse: 100%; Bovine: 100%; Rabbit: 100%; Dog: 93%; Guinea pig: 93%

**Product images:**


Mouse stem cells expressed in cytoplasm and nucleoplasm. Primary antibody is 1:2000. 20ug lysate added to each lane. Lane 1: Mouse stem cell cytoplasm. Lane 2: Mouse stem cell nucleoplasm.

[See Immunoblot Data and Customer Feedback tab for more information.](#)