

Product datasheet for **TA329204**

Runx2 Rabbit Polyclonal Antibody

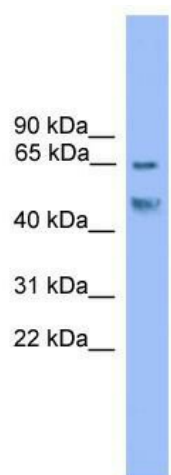
Product data:

Product Type:	Primary Antibodies
Applications:	WB
Recommended Dilution:	WB
Reactivity:	Rat
Host:	Rabbit
Isotype:	IgG
Clonality:	Polyclonal
Immunogen:	The immunogen for anti-Runx2 antibody: synthetic peptide corresponding to a region of Rat. Synthetic peptide located within the following region: PCTTTSNGSTLLNPNLPNQNDGVDADGSHSSSPTVLNSSGRMDESVWRPY
Formulation:	Liquid. Purified antibody supplied in 1x PBS buffer with 0.09% (w/v) sodium azide and 2% sucrose. <i>Note that this product is shipped as lyophilized powder to China customers.</i>
Conjugation:	Unconjugated
Storage:	Store at -20°C as received.
Stability:	Stable for 12 months from date of receipt.
Predicted Protein Size:	57 kDa
Gene Name:	runt-related transcription factor 2
Database Link:	NP_445922 Entrez Gene 367218 Rat
Background:	The function of Runx2 remains unknown.
Synonyms:	AML3; CBF-alpha-1; CBFA1; CCD; CCD1; MGC120022; MGC120023; OSF-2; OSF2; PEA2aA; PEBP2A; PEBP2A1; PEBP2A2; PEBP2aA; PEBP2aA1
Note:	Immunogen sequence homology: Dog: 100%; Pig: 100%; Rat: 100%; Horse: 100%; Human: 100%; Mouse: 100%; Bovine: 100%; Zebrafish: 100%; Guinea pig: 100%



[View online »](#)

Product images:



WB Suggested Anti-Runx2 Antibody Titration: 0.2-1 ug/ml; ELISA Titer: 1:312500; Positive Control: Rat Liver