

Product datasheet for **TA329202**

PALMD Rabbit Polyclonal Antibody

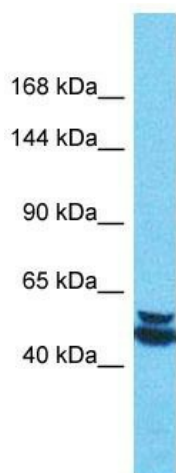
Product data:

Product Type:	Primary Antibodies
Applications:	WB
Recommended Dilution:	WB
Reactivity:	Human
Host:	Rabbit
Isotype:	IgG
Clonality:	Polyclonal
Immunogen:	The immunogen for Anti-PALMD antibody is: synthetic peptide directed towards the middle region of Human PALMD. Synthetic peptide located within the following region: HAELVIDDEEEDEGEAEKPSYHPIAPHSQVYQPAKPTPLPRKRSEASP
Formulation:	Liquid. Purified antibody supplied in 1x PBS buffer with 0.09% (w/v) sodium azide and 2% sucrose. <i>Note that this product is shipped as lyophilized powder to China customers.</i>
Purification:	Affinity Purified
Conjugation:	Unconjugated
Storage:	Store at -20°C as received.
Stability:	Stable for 12 months from date of receipt.
Predicted Protein Size:	60 kDa
Gene Name:	palmdelphin
Database Link:	NP_060204 Entrez Gene 54873 Human Q9NP74
Background:	The function of this protein remains unknown.
Synonyms:	C1orf11; PALML
Note:	Immunogen sequence homology: Dog: 100%; Human: 100%; Bovine: 100%; Pig: 93%; Guinea pig: 93%; Rat: 86%; Mouse: 85%; Yeast: 83%



[View online »](#)

Product images:



Host: Rabbit

Target Name: PALMD

Sample Tissue: Thymus Tumor Lysate

Antibody Dilution: 1.0 μ g/ml

Host: Rabbit; Target Name: PALMD; Sample Tissue: Thymus Tumor lysates; Antibody Dilution: 1.0 μ g/ml