

Product datasheet for **TA329201**

Rb2 p130 (RBL2) Rabbit Polyclonal Antibody

Product data:

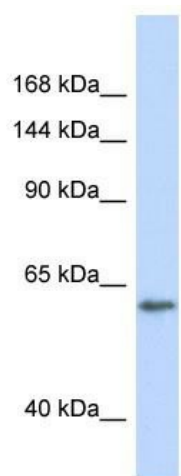
Product Type:	Primary Antibodies
Applications:	WB
Recommended Dilution:	WB
Reactivity:	Human
Host:	Rabbit
Isotype:	IgG
Clonality:	Polyclonal
Immunogen:	The immunogen for Anti-RBL2 antibody is: synthetic peptide directed towards the C-terminal region of Human RBL2. Synthetic peptide located within the following region: NETMLSPREKIFYFYSNSPSKRLREINSMIRTGETPTKKGILLEDGSES
Formulation:	Liquid. Purified antibody supplied in 1x PBS buffer with 0.09% (w/v) sodium azide and 2% sucrose. <i>Note that this product is shipped as lyophilized powder to China customers.</i>
Purification:	Affinity Purified
Conjugation:	Unconjugated
Storage:	Store at -20°C as received.
Stability:	Stable for 12 months from date of receipt.
Predicted Protein Size:	56 kDa
Gene Name:	RB transcriptional corepressor like 2
Database Link:	NP_005602 Entrez Gene 5934 Human Q08999
Background:	The function of this protein remains unknown.
Synonyms:	P130; Rb2
Note:	Immunogen sequence homology: Dog: 100%; Pig: 100%; Rat: 100%; Horse: 100%; Human: 100%; Mouse: 100%; Bovine: 100%; Rabbit: 100%; Guinea pig: 93%; Zebrafish: 86%
Protein Families:	Druggable Genome, Transcription Factors



[View online »](#)

Protein Pathways: Cell cycle, TGF-beta signaling pathway

Product images:



Host: Rabbit

Target Name: RBL2

Sample Tissue: HeLa Cell Lysate

Antibody Dilution: 1.0 μ g/ml

Host: Rabbit; Target Name: RBL2; Sample Tissue:
HeLa Whole Cell lysates; Antibody Dilution:
1.0ug/ml