

## Product datasheet for **TA329200**

### Mineralocorticoid Receptor (NR3C2) Rabbit Polyclonal Antibody

#### Product data:

Product Type:	Primary Antibodies
Applications:	WB
Recommended Dilution:	WB
Reactivity:	Human
Host:	Rabbit
Isotype:	IgG
Clonality:	Polyclonal
Immunogen:	The immunogen for anti-NR3C2 antibody: synthetic peptide directed towards the N terminal of human NR3C2. Synthetic peptide located within the following region: METKGYHSLPEGLDMERRWGQVSQAVERSSLGPTERTDENNYMEIVNVSC
Formulation:	Liquid. Purified antibody supplied in 1x PBS buffer with 0.09% (w/v) sodium azide and 2% sucrose. <i>Note that this product is shipped as lyophilized powder to China customers.</i>
Conjugation:	Unconjugated
Storage:	Store at -20°C as received.
Stability:	Stable for 12 months from date of receipt.
Predicted Protein Size:	107 kDa
Gene Name:	nuclear receptor subfamily 3 group C member 2
Database Link:	<a href="#">NP_000892</a> <a href="#">Entrez Gene 4306 Human P08235</a>
Background:	This gene encodes the mineralocorticoid receptor, which mediates aldosterone actions on salt and water balance within restricted target cells. The protein functions as a ligand-dependent transcription factor that binds to mineralocorticoid response elements in order to transactivate target genes. Mutations in this gene cause autosomal dominant pseudohypoaldosteronism type I, a disorder characterized by urinary salt wasting. Defects in this gene are also associated with early onset hypertension with severe exacerbation in pregnancy. Alternative splicing results in multiple transcript variants. [provided by RefSeq, Oct 2009]



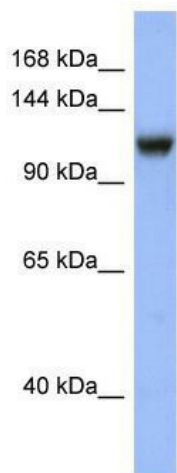
[View online »](#)

**Synonyms:** MCR; MLR; MR; NR3C2VIT

**Note:** Immunogen sequence homology: Horse: 100%; Human: 100%; Dog: 93%; Rabbit: 86%; Pig: 79%; Rat: 79%; Mouse: 79%; Bovine: 77%

**Protein Families:** Druggable Genome, Nuclear Hormone Receptor, Transcription Factors

**Product images:**



WB Suggested Anti-NR3C2 Antibody Titration:  
0.2-1 ug/ml; ELISA Titer: 1:312500; Positive  
Control: HT1080 cell lysate