

Product datasheet for **TA329199**

ATF5 Rabbit Polyclonal Antibody

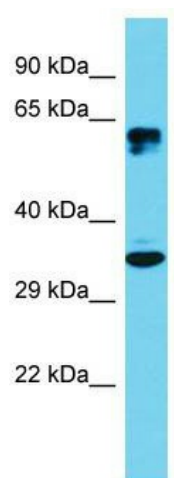
Product data:

Product Type:	Primary Antibodies
Applications:	WB
Recommended Dilution:	WB
Reactivity:	Human
Host:	Rabbit
Isotype:	IgG
Clonality:	Polyclonal
Immunogen:	The immunogen for Anti-ATF5 antibody is: synthetic peptide directed towards the N-terminal region of Human ATF5. Synthetic peptide located within the following region: MASLLKKELEQMEDFFLDAPPLPPPSPPLPPPPLPPAPSLPLSLPSFDL
Formulation:	Liquid. Purified antibody supplied in 1x PBS buffer with 0.09% (w/v) sodium azide and 2% sucrose. <i>Note that this product is shipped as lyophilized powder to China customers.</i>
Conjugation:	Unconjugated
Storage:	Store at -20°C as received.
Stability:	Stable for 12 months from date of receipt.
Predicted Protein Size:	31 kDa
Gene Name:	activating transcription factor 5
Database Link:	NP_036200 Entrez Gene 22809 Human Q9Y2D1
Background:	Overexpression of the bZIP protein ATF5, a transcriptional activator, stimulates asparagine synthetase promoter/reporter gene transcription via the nutrient-sensing response unit. ATF5 is also a new interacting partner of cyclin D3.
Synonyms:	ATFX; HMFN0395
Note:	Immunogen sequence homology: Dog: 100%; Pig: 100%; Rat: 100%; Horse: 100%; Human: 100%; Mouse: 100%; Guinea pig: 100%; Bovine: 93%
Protein Families:	Transcription Factors



[View online »](#)

Product images:



Host: Rabbit; Target Name: ATF5; Sample Tissue: HeLa Whole Cell lysates; Antibody Dilution: 1.0ug/ml