

## Product datasheet for **TA329197**

### Wilms Tumor Protein (WT1) Rabbit Polyclonal Antibody

#### Product data:

|                         |  |
|-------------------------|--|
| Product Type:           | Primary Antibodies   |
| Applications:           | WB   |
| Recommended Dilution:   | WB   |
| Reactivity:             | Human  |
| Host:                   | Rabbit   |
| Isotype:                | IgG  |
| Clonality:              | Polyclonal   |
| Immunogen:              | The immunogen for Anti-WT1 antibody is: synthetic peptide directed towards the N-terminal region of Human WT1. Synthetic peptide located within the following region:<br>DFAPPGASAYGSLGGPAPPAPPPPPPPPHSFIKQEPSWGGGAEPHEEQC |
| Formulation:            | Liquid. Purified antibody supplied in 1x PBS buffer with 0.09% (w/v) sodium azide and 2% sucrose.<br><i>Note that this product is shipped as lyophilized powder to China customers.</i>                                    |
| Purification:           | Affinity Purified  |
| Conjugation:            | Unconjugated   |
| Storage:                | Store at -20°C as received.  |
| Stability:              | Stable for 12 months from date of receipt.   |
| Predicted Protein Size: | 47 kDa   |
| Gene Name:              | Wilms tumor 1  |
| Database Link:          | <a href="#">NP_077743</a><br><a href="#">Entrez Gene 7490 Human P19544</a>   |



[View online »](#)

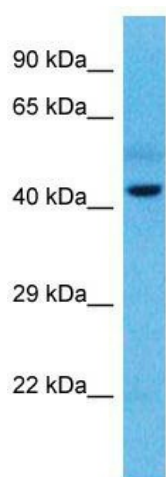
**Background:** WT1 is a transcription factor that contains four zinc-finger motifs at the C-terminus and a proline/glutamine-rich DNA-binding domain at the N-terminus. It has an essential role in the normal development of the urogenital system, and it is mutated in a small subset of patients with Wilm's tumors. Multiple transcript variants, resulting from alternative splicing at two coding exons, have been well characterized. There is also evidence for the use of non-AUG (CUG) translation initiation site upstream of, and in-frame with the first AUG, leading to additional isoforms.

**Synonyms:** AWT1; GUD; WAGR; Wilms tumor 1; WIT-2; WT33

**Note:** Immunogen sequence homology: Dog: 100%; Pig: 100%; Rat: 100%; Human: 100%; Mouse: 100%; Rabbit: 100%; Zebrafish: 86%

**Protein Families:** Druggable Genome, Transcription Factors

### Product images:



Host: Rabbit; Target Name: WT1; Sample Tissue: Esophagus Tumor lysates; Antibody Dilution: 1.0ug/ml