

Product datasheet for **TA329196**

Tcf3 Rabbit Polyclonal Antibody

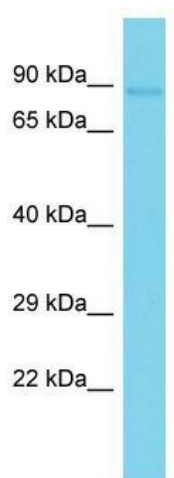
Product data:

Product Type:	Primary Antibodies
Applications:	WB
Recommended Dilution:	WB
Reactivity:	Rat
Host:	Rabbit
Isotype:	IgG
Clonality:	Polyclonal
Immunogen:	The immunogen for Anti-Tcf3 antibody is: synthetic peptide directed towards the C-terminal region of Rat Tcf3. Synthetic peptide located within the following region: ARERLRVRDINEAFKELGRMCQLHLSTEKPQTKLLILHQAVAVILSLEQQ
Formulation:	Liquid. Purified antibody supplied in 1x PBS buffer with 0.09% (w/v) sodium azide and 2% sucrose. <i>Note that this product is shipped as lyophilized powder to China customers.</i>
Conjugation:	Unconjugated
Storage:	Store at -20°C as received.
Stability:	Stable for 12 months from date of receipt.
Predicted Protein Size:	71 kDa
Gene Name:	transcription factor 3
Database Link:	NP_598208 Entrez Gene 171046 Rat P21677
Background:	Tcf3 is a transcriptional regulator; It binds enhancer motifs of pancreatic exocrine genes.
Synonyms:	bHLHb21; E2A; ITF1; MGC129647; MGC129648; TCF-3; VDIR
Note:	Immunogen sequence homology: Dog: 100%; Pig: 100%; Rat: 100%; Human: 100%; Guinea pig: 100%; Horse: 93%; Mouse: 93%; Bovine: 93%; Rabbit: 93%; Zebrafish: 93%



[View online »](#)

Product images:



Host: Rabbit; Target Name: Tcf3; Sample Tissue:
Rat Testis lysates; Antibody Dilution: 1.0ug/ml