

Product datasheet for **TA329195**

PBX1 Rabbit Polyclonal Antibody

Product data:

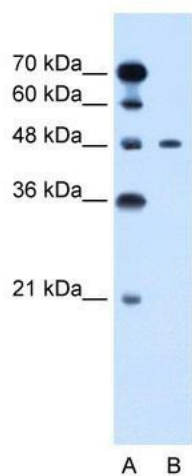
Product Type:	Primary Antibodies
Applications:	WB
Recommended Dilution:	WB
Reactivity:	Human, Mouse
Host:	Rabbit
Isotype:	IgG
Clonality:	Polyclonal
Immunogen:	The immunogen for anti-PBX1 antibody: synthetic peptide directed towards the N terminal of human PBX1. Synthetic peptide located within the following region: MDEQPRLMHSHAGVGMAGHPGLSQHLQDGAGGTEGEGGRKQDIGDILQQI
Formulation:	Liquid. Purified antibody supplied in 1x PBS buffer with 0.09% (w/v) sodium azide and 2% sucrose. <i>Note that this product is shipped as lyophilized powder to China customers.</i>
Conjugation:	Unconjugated
Storage:	Store at -20°C as received.
Stability:	Stable for 12 months from date of receipt.
Predicted Protein Size:	47 kDa
Gene Name:	PBX homeobox 1
Database Link:	NP_002576 Entrez Gene 5087 Human P40424
Background:	PBX1 binds the sequence 5'-ATCAATCAA-3'. It acts as a transcriptional activator of PF4 in complex with MEIS1. It may be converted into a potent transcriptional activator by the (1;19) translocation. It also may have a role in steroidogenesis and, subsequently, sexual development and differentiation.
Synonyms:	DKFZp686B09108; MGC126627
Note:	Immunogen sequence homology: Dog: 100%; Pig: 100%; Rat: 100%; Human: 100%; Mouse: 100%; Bovine: 100%



[View online »](#)

Protein Families: Druggable Genome, Stem cell - Pluripotency, Transcription Factors

Product images:



WB Suggested Anti-PBX1 Antibody Titration: 0.2-1 ug/ml; ELISA Titer: 1:312500; Positive Control: Jurkat cell lysate