

## Product datasheet for TA329194

### Pax7 Rabbit Polyclonal Antibody

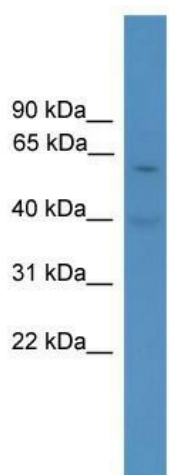
#### Product data:

Product Type:	Primary Antibodies
Applications:	IF, WB
Recommended Dilution:	WB, IF
Reactivity:	Rat, Mouse
Host:	Rabbit
Isotype:	IgG
Clonality:	Polyclonal
Immunogen:	The immunogen for anti-Pax7 antibody: synthetic peptide directed towards the middle region of human Pax7. Synthetic peptide located within the following region: SDVESEPDLPKQRRSRTTFTAEQLEELEKAFERTHYDPDIYTRELAQ
Formulation:	Liquid. Purified antibody supplied in 1x PBS buffer with 0.09% (w/v) sodium azide and 2% sucrose. <i>Note that this product is shipped as lyophilized powder to China customers.</i>
Conjugation:	Unconjugated
Storage:	Store at -20°C as received.
Stability:	Stable for 12 months from date of receipt.
Predicted Protein Size:	55 kDa
Gene Name:	paired box 7
Database Link:	<a href="#">NP_001178913</a> <a href="#">Entrez Gene 18509 Mouse</a> <a href="#">Entrez Gene 500574 Rat</a>
Background:	The function of Pax7 remains unknown.
Synonyms:	FLJ37460; HUP1; PAX7B
Note:	Immunogen sequence homology: Dog: 100%; Pig: 100%; Rat: 100%; Human: 100%; Mouse: 100%; Bovine: 100%; Rabbit: 100%; Zebrafish: 100%; Guinea pig: 100%; Goat: 86%

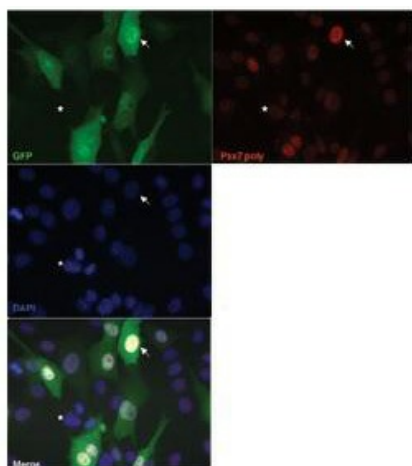


[View online »](#)

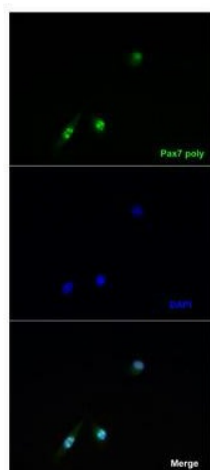
Product images:



WB Suggested Anti-Pax7 Antibody Titration: 0.2-1 ug/ml; ELISA Titer: 1:312500; Positive Control: Rat Muscle



Sample Type : C2C12;



Immunofluorescence -- Sample Type:  
Overexpression of Pax7 in C2C12 cells  
Dilution:  
1:100