

## Product datasheet for TA329191

### LMO2 Rabbit Polyclonal Antibody

#### Product data:

Product Type:	Primary Antibodies
Applications:	WB
Recommended Dilution:	WB
Reactivity:	Human
Host:	Rabbit
Isotype:	IgG
Clonality:	Polyclonal
Immunogen:	The immunogen for Anti-LMO2 antibody is: synthetic peptide directed towards the N-terminal region of Human LMO2. Synthetic peptide located within the following region: RKSLDPSEEPVDEVLQIPPSLLTCGGCQQNIGDRYFLKAIDQYWHEDCLS
Formulation:	Liquid. Purified antibody supplied in 1x PBS buffer with 0.09% (w/v) sodium azide and 2% sucrose. <i>Note that this product is shipped as lyophilized powder to China customers.</i>
Purification:	Affinity Purified
Conjugation:	Unconjugated
Storage:	Store at -20°C as received.
Stability:	Stable for 12 months from date of receipt.
Predicted Protein Size:	24 kDa
Gene Name:	LIM domain only 2
Database Link:	<a href="#">NP_005565</a> <a href="#">Entrez Gene 4005 Human</a> <a href="#">P25791</a>
Background:	LMO2 encodes a cysteine-rich, two LIM-domain protein that is required for yolk sac erythropoiesis. The LMO2 protein has a central and crucial role in hematopoietic development and is highly conserved. The LMO2 transcription start site is located approximately 25 kb downstream from the 11p13 T-cell translocation cluster (11p13 ttc), where a number T-cell acute lymphoblastic leukemia-specific translocations occur. Alternative splicing results in multiple transcript variants encoding different isoforms.



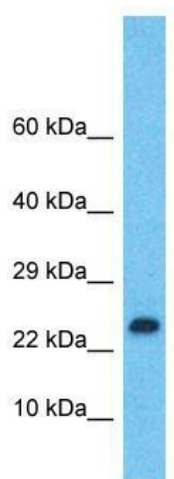
[View online »](#)

**Synonyms:** RBTN2; RBTNL1; RHOM2; TTG2

**Note:** Immunogen sequence homology: Dog: 100%; Pig: 100%; Rat: 100%; Horse: 100%; Human: 100%; Mouse: 100%; Bovine: 100%; Rabbit: 100%; Guinea pig: 100%; Zebrafish: 86%

**Protein Families:** Druggable Genome

**Product images:**



Host: Rabbit; Target Name: LMO2; Sample Tissue: Ovary Tumor lysates; Antibody Dilution: 1.0ug/ml