

Product datasheet for **TA329189**

Bcl11a Rabbit Polyclonal Antibody

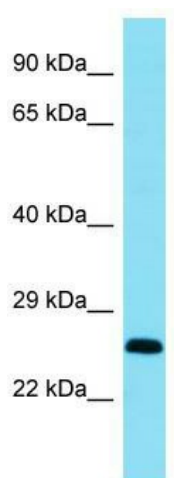
Product data:

Product Type:	Primary Antibodies
Applications:	WB
Recommended Dilution:	WB
Reactivity:	Mouse
Host:	Rabbit
Isotype:	IgG
Clonality:	Polyclonal
Immunogen:	The immunogen for Anti-Bcl11a antibody is: synthetic peptide directed towards the C-terminal region of Mouse Bcl11a. Synthetic peptide located within the following region: GLRIYLESEHGSPLTPRVLHTPPFGVVPRELKMCGSFRMEAQEPSSEKL
Formulation:	Liquid. Purified antibody supplied in 1x PBS buffer with 0.09% (w/v) sodium azide and 2% sucrose.
Conjugation:	Unconjugated
Storage:	Store at -20°C as received.
Stability:	Stable for 12 months from date of receipt.
Predicted Protein Size:	26 kDa
Gene Name:	B cell CLL/lymphoma 11A (zinc finger protein)
Database Link:	NP_001152761 Entrez Gene 14025 Mouse Q9QYE3
Background:	The function of this protein remains unknown.
Synonyms:	BCL11A-L; BCL11A-S; BCL11A-XL; CTIP1; EVI-9; EVI9; FLJ10173; FLJ34997; HBFQTL5; KIAA1809; ZNF856
Note:	Immunogen sequence homology: Dog: 100%; Pig: 100%; Horse: 100%; Human: 100%; Bovine: 100%; Guinea pig: 100%; Rat: 92%; Mouse: 92%



[View online »](#)

Product images:



Host: Rabbit; Target Name: Bcl11a; Sample
Tissue: Mouse Heart lysates; Antibody Dilution:
1.0ug/ml