

Product datasheet for **TA329188**

ASCL1 Rabbit Polyclonal Antibody

Product data:

Product Type:	Primary Antibodies
Applications:	WB
Recommended Dilution:	WB
Reactivity:	Human
Host:	Rabbit
Isotype:	IgG
Clonality:	Polyclonal
Immunogen:	The immunogen for Anti-ASCL1 antibody is: synthetic peptide directed towards the N-terminal region of Human ASCL1. Synthetic peptide located within the following region: AQQQQQQQQQQQAPQLRPAADGQPSGGGHKSAPKQVKRQRSSSPELMRC
Formulation:	Liquid. Purified antibody supplied in 1x PBS buffer with 0.09% (w/v) sodium azide and 2% sucrose. <i>Note that this product is shipped as lyophilized powder to China customers.</i>
Purification:	Affinity Purified
Conjugation:	Unconjugated
Storage:	Store at -20°C as received.
Stability:	Stable for 12 months from date of receipt.
Predicted Protein Size:	25 kDa
Gene Name:	achaete-scute family bHLH transcription factor 1
Database Link:	NP_004307 Entrez Gene 429 Human P50553
Background:	This gene encodes a member of the basic helix-loop-helix (BHLH) family of transcription factors. The protein activates transcription by binding to the E box (5'-CANNTG-3'). Dimerization with other BHLH proteins is required for efficient DNA binding. This protein plays a role in the neuronal commitment and differentiation and in the generation of olfactory and autonomic neurons. Mutations in this gene may contribute to the congenital central hypoventilation syndrome (CCHS) phenotype in rare cases.



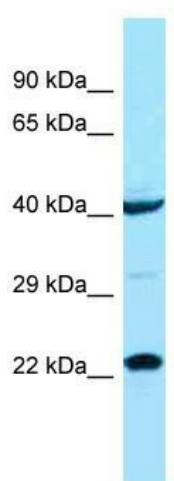
[View online »](#)

Synonyms: ASH1; bHLHa46; HASH1; MASH1

Note: Immunogen sequence homology: Pig: 100%; Human: 100%; Bovine: 100%; Guinea pig: 100%; Dog: 92%; Rat: 92%; Mouse: 92%; Rabbit: 92%; Zebrafish: 85%

Protein Families: Druggable Genome, Transcription Factors

Product images:



Host: Rabbit; Target Name: ASCL1; Sample Tissue: COLO205 Whole cell lysates; Antibody Dilution: 1.0ug/ml; There is BioGPS gene expression data showing that ASCL1 is expressed in COLO205