

## Product datasheet for TA329187

### Progesterone Receptor Rabbit Polyclonal Antibody

#### Product data:

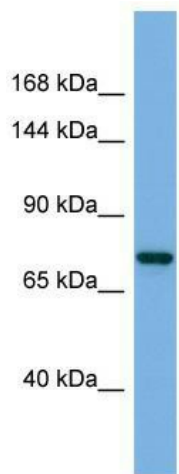
<b>Product Type:</b>	Primary Antibodies
<b>Applications:</b>	WB
<b>Recommended Dilution:</b>	WB
<b>Reactivity:</b>	Human
<b>Host:</b>	Rabbit
<b>Isotype:</b>	IgG
<b>Clonality:</b>	Polyclonal
<b>Immunogen:</b>	The immunogen for Anti-PR antibody is: synthetic peptide directed towards the N-terminal region of Human PR. Synthetic peptide located within the following region: LPRGLSPARQLLLPASESPHWGAPVKPSPQAAAVEVEEEDGSESEESAG
<b>Formulation:</b>	Liquid. Purified antibody supplied in 1x PBS buffer with 0.09% (w/v) sodium azide and 2% sucrose. <i>Note that this product is shipped as lyophilized powder to China customers.</i>
<b>Purification:</b>	Affinity Purified
<b>Conjugation:</b>	Unconjugated
<b>Storage:</b>	Store at -20°C as received.
<b>Stability:</b>	Stable for 12 months from date of receipt.
<b>Predicted Protein Size:</b>	75 kDa
<b>Database Link:</b>	<a href="#">NP_000917</a> <a href="#">Entrez Gene 5241 Human</a>
<b>Background:</b>	The function of this protein remains unknown.
<b>Synonyms:</b>	NR3C3; PR
<b>Note:</b>	Immunogen sequence homology: Human: 100%; Rat: 91%; Rabbit: 91%



**Protein Families:** Druggable Genome, Nuclear Hormone Receptor, Transcription Factors

**Protein Pathways:** Oocyte meiosis, Progesterone-mediated oocyte maturation

**Product images:**



Host: Rabbit; Target Name: PR; Sample Tissue: ACHN Whole Cell lysates; Antibody Dilution: 1.0ug/ml