

Product datasheet for **TA329183**

CX3CL1 Rabbit Polyclonal Antibody

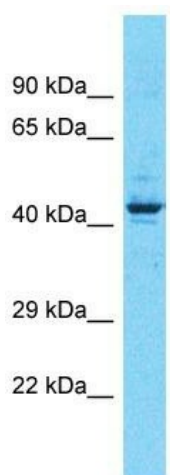
Product data:

Product Type:	Primary Antibodies
Applications:	WB
Recommended Dilution:	WB
Reactivity:	Human
Host:	Rabbit
Clonality:	Polyclonal
Immunogen:	The immunogen for Anti-CX3CL1 antibody is: synthetic peptide directed towards the middle region of Human CX3CL1. Synthetic peptide located within the following region: APHQPGPSLWAEAKTSEAPSTQDPSTQASTASSPAPEENAPSEGQRVWGQ
Formulation:	Liquid. Purified antibody supplied in 1x PBS buffer with 0.09% (w/v) sodium azide and 2% sucrose. <i>Note that this product is shipped as lyophilized powder to China customers.</i>
Conjugation:	Unconjugated
Storage:	Store at -20°C as received.
Stability:	Stable for 12 months from date of receipt.
Predicted Protein Size:	43 kDa
Gene Name:	C-X3-C motif chemokine ligand 1
Database Link:	NP_002987 Entrez Gene 6376 Human P78423
Background:	The function of this protein remains unknown.
Synonyms:	ABCD-3; C3Xkine; CXC3; CXC3C; fractalkine; neurotactin; NTN; NTT; SCYD1
Note:	Immunogen sequence homology: Pig: 100%; Human: 100%; Dog: 85%
Protein Families:	Druggable Genome, Secreted Protein, Transmembrane
Protein Pathways:	Chemokine signaling pathway, Cytokine-cytokine receptor interaction



[View online »](#)

Product images:



Host: Rabbit

Target Name: CX3CL1

Sample Tissue: OVCAR-3 Cell Lysate

Antibody Dilution: 1.0 μ g/ml

Host: Rabbit; Target Name: CX3CL1; Sample Tissue: OVCAR-3 Whole Cell lysates; Antibody Dilution: 3.0 μ g/ml