

Product datasheet for **TA329180**

Ccl20 Rabbit Polyclonal Antibody

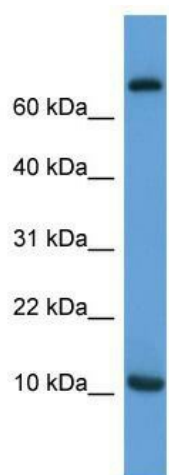
Product data:

| | |
|-------------------------|---|
| Product Type: | Primary Antibodies |
| Applications: | WB |
| Recommended Dilution: | WB |
| Reactivity: | Rat |
| Host: | Rabbit |
| Isotype: | IgG |
| Clonality: | Polyclonal |
| Immunogen: | The immunogen for anti-Ccl20 antibody: synthetic peptide corresponding to a region of Rat. Synthetic peptide located within the following region: CCLTYTKNVYHHARNFVGFQTQMADEACDINAIIFHLKSKRSVCADPKQI |
| Formulation: | Liquid. Purified antibody supplied in 1x PBS buffer with 0.09% (w/v) sodium azide and 2% sucrose. <i>Note that this product is shipped as lyophilized powder to China customers.</i> |
| Conjugation: | Unconjugated |
| Storage: | Store at -20°C as received. |
| Stability: | Stable for 12 months from date of receipt. |
| Predicted Protein Size: | 11 kDa |
| Gene Name: | C-C motif chemokine ligand 20 |
| Database Link: | NP_062106 Entrez Gene 29538 Rat P97884 |
| Background: | Ccl20 is a chemotactic factor that attracts lymphocytes and, slightly, neutrophils, but not monocytes. Ccl20 may play a role in modulating inflammatory cell recruitment to the CNS and therefore contribute to tissue injury in ischemic stroke and autoimmune diseases. |
| Synonyms: | CKb4; exodus-1; LARC; MIP-3-alpha; MIP-3a; MIP3A; SCYA20; ST38 |
| Note: | Immunogen sequence homology: Human: 100%; Rat: 94%; Pig: 88%; Horse: 88%; Mouse: 88%; Rabbit: 88%; Guinea pig: 88%; Dog: 85% |



[View online »](#)

Product images:



WB Suggested Anti-Ccl20 Antibody Titration: 0.2-1 ug/ml; ELISA Titer: 1:62500; Positive Control: Rat Heart