

Product datasheet for **TA329179**

FOXM1 Rabbit Polyclonal Antibody

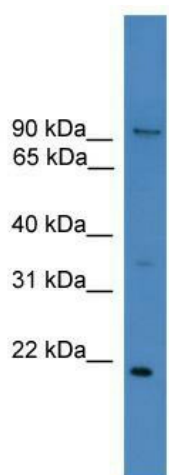
Product data:

Product Type:	Primary Antibodies
Applications:	IHC, WB
Recommended Dilution:	WB, IHC
Reactivity:	Human
Host:	Rabbit
Isotype:	IgG
Clonality:	Polyclonal
Immunogen:	The immunogen for anti-FOXM1 antibody: synthetic peptide directed towards the N terminal of human FOXM1. Synthetic peptide located within the following region: LKRRRLPLVQNAPSETSEEEPKRSPAQQESNQAEASKEVAESNSCKFPA
Formulation:	Liquid. Purified antibody supplied in 1x PBS buffer with 0.09% (w/v) sodium azide and 2% sucrose. <i>Note that this product is shipped as lyophilized powder to China customers.</i>
Conjugation:	Unconjugated
Storage:	Store at -20°C as received.
Stability:	Stable for 12 months from date of receipt.
Predicted Protein Size:	88 kDa
Gene Name:	forkhead box M1
Database Link:	NP_973731 Entrez Gene 2305 Human Q08050
Background:	This protein acts as a Transcriptional activatory factor. May play a role in the control of cell proliferation.
Synonyms:	FKHL16; FOXM1B; HFH-11; HFH11; HNF-3; INS-1; MPHOSPH2; MPP-2; MPP2; PIG29; TGT3; TRIDENT
Note:	Immunogen sequence homology: Human: 100%
Protein Families:	Transcription Factors

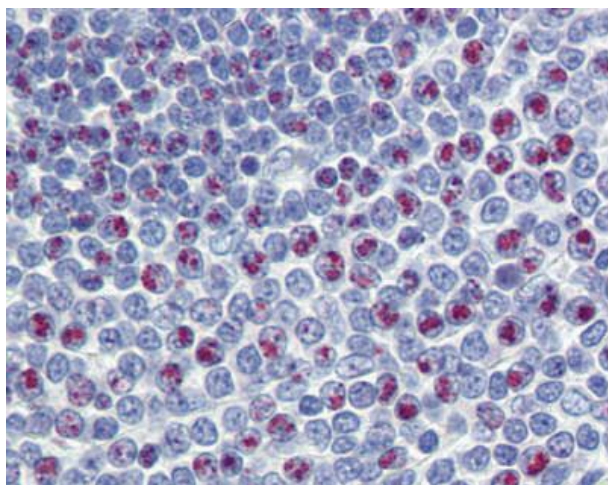


[View online »](#)

Product images:



WB Suggested Anti-FOXM1 Antibody Titration: 1 ug/ml; Positive Control: THP-1 cell lysate



Jurkat