

## Product datasheet for **TA329177**

### Rab10 Rabbit Polyclonal Antibody

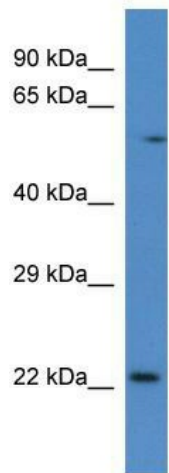
#### Product data:

Product Type:	Primary Antibodies
Applications:	WB
Recommended Dilution:	WB
Reactivity:	Human, Mouse
Host:	Rabbit
Isotype:	IgG
Clonality:	Polyclonal
Immunogen:	The immunogen for anti-Rab10 antibody: synthetic peptide corresponding to a region of Mouse. Synthetic peptide located within the following region: HGIRFFETSAKANINIEKAFLTLAEDILRKTPVKEPNSENVDISSGGGVT
Formulation:	Liquid. Purified antibody supplied in 1x PBS buffer with 0.09% (w/v) sodium azide and 2% sucrose. <i>Note that this product is shipped as lyophilized powder to China customers.</i>
Conjugation:	Unconjugated
Storage:	Store at -20°C as received.
Stability:	Stable for 12 months from date of receipt.
Predicted Protein Size:	22 kDa
Gene Name:	RAB10, member RAS oncogene family
Database Link:	<a href="#">NP_057885</a> <a href="#">Entrez Gene 10890 Human</a> <a href="#">Entrez Gene 19325 Mouse</a> <a href="#">P61027</a>
Background:	Rab10 may be involved in vesicular trafficking and neurotransmitter release.
Synonyms:	RAB10
Note:	Immunogen sequence homology: Dog: 100%; Pig: 100%; Rat: 100%; Horse: 100%; Human: 100%; Mouse: 100%; Sheep: 100%; Bovine: 100%; Rabbit: 100%; Zebrafish: 100%; Guinea pig: 100%

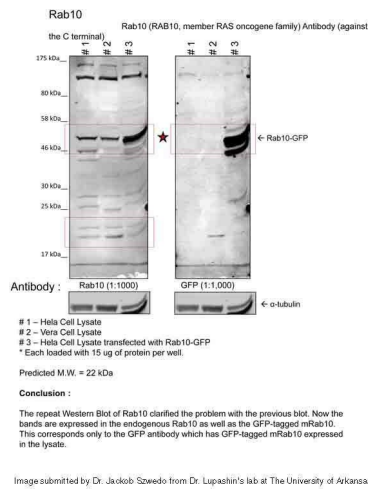


[View online »](#)

Product images:



Rab10 antibody - C-terminal region validated by WB using Mouse Kidney lysate at 1ug/ml.



Sample Type: 1. Human Cervical Cancer Cell Lysate (15ug); 2. Monkey Fibroblast Cell Lysate (15ug); 3. Human Cervical Cancer Cell transfected with mouse Rab10-GFP (15ug); Primary Dilution: 1:1000; Secondary Antibody: goat anti-Rabbit; Secondary Dilution: 1:40,000; Image Submitted by: Dr. Jakob Szewdo, Dr. Lupashin's Lab; University of Arkansas for Medical Sciences See Customer Feedback tab for detailed information.