

Product datasheet for **TA329176**

NPY2R Rabbit Polyclonal Antibody

Product data:

Product Type:	Primary Antibodies
Applications:	WB
Recommended Dilution:	WB
Reactivity:	Human
Host:	Rabbit
Isotype:	IgG
Clonality:	Polyclonal
Immunogen:	The immunogen for Anti-NPY2R antibody is: synthetic peptide directed towards the N-terminal region of Human NPY2R. Synthetic peptide located within the following region: PIGAEADENQTV EEMKVEQYGPQTTPRGELVDPPELIDSTKLIEVQVV
Formulation:	Liquid. Purified antibody supplied in 1x PBS buffer with 0.09% (w/v) sodium azide and 2% sucrose. <i>Note that this product is shipped as lyophilized powder to China customers.</i>
Purification:	Affinity Purified
Conjugation:	Unconjugated
Storage:	Store at -20°C as received.
Stability:	Stable for 12 months from date of receipt.
Predicted Protein Size:	43 kDa
Gene Name:	neuropeptide Y receptor Y2
Database Link:	NP_000901 Entrez Gene 4887 Human P49146
Background:	NPY2R is a receptor for neuropeptide Y and peptide YY. The rank order of affinity of this receptor for pancreatic polypeptides is PYY > NPY > PYY (3-36) > NPY (2-36) > [Ile-31, Gln-34] PP > [Leu-31, Pro-34] NPY > PP, [Pro-34] PYY and NPY free acid.
Synonyms:	NPY2-R
Note:	Immunogen sequence homology: Pig: 100%; Rat: 100%; Human: 100%; Mouse: 100%; Bovine: 100%; Rabbit: 100%; Horse: 93%; Guinea pig: 86%

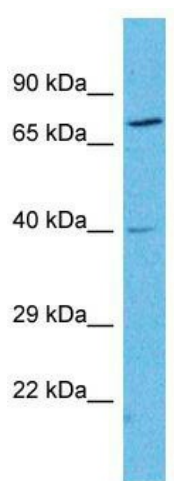


[View online »](#)

Protein Families: Druggable Genome, GPCR, Transmembrane

Protein Pathways: Neuroactive ligand-receptor interaction

Product images:



Host: Rabbit; Target Name: NPY2R; Sample Tissue: Esophagus Tumor lysates; Antibody Dilution: 1.0ug/ml