

Product datasheet for **TA329173**

GABRR1 Rabbit Polyclonal Antibody

Product data:

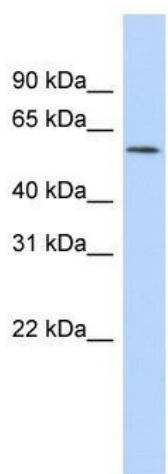
Product Type:	Primary Antibodies
Applications:	WB
Recommended Dilution:	WB
Reactivity:	Human
Host:	Rabbit
Isotype:	IgG
Clonality:	Polyclonal
Immunogen:	The immunogen for anti-GABRR1 antibody: synthetic peptide directed towards the N terminal of human GABRR1. Synthetic peptide located within the following region: MLAVPNMRFGIFLLWGWVLATESRMHWPGREHVHMSKKGPRQRREVH
Formulation:	Liquid. Purified antibody supplied in 1x PBS buffer with 0.09% (w/v) sodium azide and 2% sucrose. <i>Note that this product is shipped as lyophilized powder to China customers.</i>
Conjugation:	Unconjugated
Storage:	Store at -20°C as received.
Stability:	Stable for 12 months from date of receipt.
Predicted Protein Size:	55 kDa
Gene Name:	gamma-aminobutyric acid type A receptor rho1 subunit
Database Link:	NP_002033 Entrez Gene 2569 Human P24046
Background:	GABA is the major inhibitory neurotransmitter in the mammalian brain where it acts at GABA receptors, which are ligand-gated chloride channels. GABRR1 is a member of the rho subunit family.
Synonyms:	MGC163216
Note:	Immunogen sequence homology: Rat: 100%; Human: 100%; Pig: 87%; Guinea pig: 87%; Rabbit: 86%
Protein Families:	Druggable Genome, Ion Channels: Cys-loop Receptors, Transmembrane



[View online »](#)

Protein Pathways: Neuroactive ligand-receptor interaction

Product images:



WB Suggested Anti-GABRR1 Antibody Titration:
0.2-1 ug/ml; Positive Control: HepG2 cell lysate