

## Product datasheet for **TA329172**

### **GABA A Receptor beta 3 (GABRB3) Rabbit Polyclonal Antibody**

#### **Product data:**

<b>Product Type:</b>	Primary Antibodies
<b>Applications:</b>	WB
<b>Recommended Dilution:</b>	WB
<b>Reactivity:</b>	Human
<b>Host:</b>	Rabbit
<b>Clonality:</b>	Polyclonal
<b>Immunogen:</b>	The immunogen for Anti-GABRB3 antibody is: synthetic peptide directed towards the middle region of Human GABRB3. Synthetic peptide located within the following region: FYWRGGDKAVTGVERIELPQFSIVEHRLVSRNWFATGAYPRLSLSFRLK
<b>Formulation:</b>	Liquid. Purified antibody supplied in 1x PBS buffer with 0.09% (w/v) sodium azide and 2% sucrose. <i>Note that this product is shipped as lyophilized powder to China customers.</i>
<b>Conjugation:</b>	Unconjugated
<b>Storage:</b>	Store at -20°C as received.
<b>Stability:</b>	Stable for 12 months from date of receipt.
<b>Predicted Protein Size:</b>	52 kDa
<b>Gene Name:</b>	gamma-aminobutyric acid type A receptor beta3 subunit
<b>Database Link:</b>	<a href="#">NP_068712</a> <a href="#">Entrez Gene 2562 Human P28472</a>
<b>Background:</b>	This gene encodes a member of the ligand-gated ionic channel family. The encoded protein is one the subunits of a multi-subunit chloride channel that serves as the receptor for gamma-aminobutyric acid, a major inhibitory neurotransmitter of the mammalian nervous system. This gene is located on the long arm of chromosome 15 in a cluster with two other genes encoding related subunits of the family. This gene may be associated with the pathogenesis of several disorders including Angelman syndrome, Prader-Willi syndrome, nonsyndromic orofacial clefts, epilepsy and autism. Alternatively spliced transcript variants encoding distinct isoforms have been described.
<b>Synonyms:</b>	ECA5; EIEE43



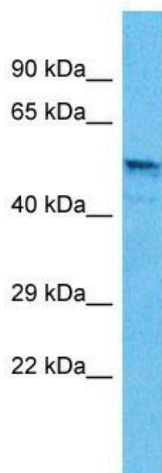
[View online »](#)

**Note:** Immunogen sequence homology: Dog: 100%; Pig: 100%; Rat: 100%; Horse: 100%; Human: 100%; Mouse: 100%; Bovine: 100%; Rabbit: 100%; Guinea pig: 100%

**Protein Families:** Druggable Genome, Ion Channels: Cys-loop Receptors, Transmembrane

**Protein Pathways:** Neuroactive ligand-receptor interaction

### Product images:



Host: Rabbit

Target Name: GABRB3

Sample Tissue: ACHN Cell Lysate

Antibody Dilution: 1.0µg/ml

Host: Rabbit; Target Name: GABRB3; Sample Tissue: ACHN Whole cell lysates; Antibody Dilution: 1.0ug/ml