

Product datasheet for **TA329169**

Gabra5 Rabbit Polyclonal Antibody

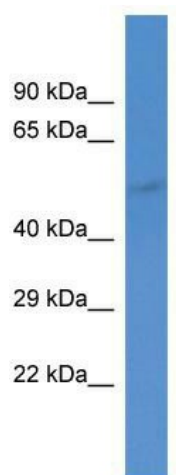
Product data:

Product Type:	Primary Antibodies
Applications:	WB
Recommended Dilution:	WB
Reactivity:	Mouse
Host:	Rabbit
Isotype:	IgG
Clonality:	Polyclonal
Immunogen:	The immunogen for anti-Gabra5 antibody: synthetic peptide corresponding to the middle region of mouse GABRA5. Synthetic peptide located within the following region: WTNGSTKSVVVAEDGSRLNQYHLMGQTVGTENISTSTGEYTIMTAHFHLK
Formulation:	Liquid. Purified antibody supplied in 1x PBS buffer with 0.09% (w/v) sodium azide and 2% sucrose. <i>Note that this product is shipped as lyophilized powder to China customers.</i>
Conjugation:	Unconjugated
Storage:	Store at -20°C as received.
Stability:	Stable for 12 months from date of receipt.
Predicted Protein Size:	52 kDa
Gene Name:	gamma-aminobutyric acid (GABA) A receptor, subunit alpha 5
Database Link:	NP_795916 Entrez Gene 110886 Mouse Q8BHJ7
Background:	GABA, the major inhibitory neurotransmitter in the vertebrate brain, mediates neuronal inhibition by binding to the GABA/benzodiazepine receptor and opening an integral chloride channel.
Synonyms:	MGC138184
Note:	Immunogen sequence homology: Dog: 100%; Pig: 100%; Rat: 100%; Horse: 100%; Human: 100%; Mouse: 100%; Bovine: 100%; Rabbit: 100%; Guinea pig: 100%



[View online »](#)

Product images:



WB Suggested Anti-Gabra5 Antibody; Titration:
1.0 ug/ml; Positive Control: Mouse liver