

Product datasheet for **TA329168**

MAP3K8 Rabbit Polyclonal Antibody

Product data:

Product Type:	Primary Antibodies
Applications:	WB
Recommended Dilution:	WB
Reactivity:	Human
Host:	Rabbit
Isotype:	IgG
Clonality:	Polyclonal
Immunogen:	The immunogen for anti-MAP3K8 antibody: synthetic peptide directed towards the N terminal of human MAP3K8. Synthetic peptide located within the following region: ASEEPAYVEPSLMTMCQDSNQNDERSKSLLLSGQVWLVSSVRYGTVEDL
Formulation:	Liquid. Purified antibody supplied in 1x PBS buffer with 0.09% (w/v) sodium azide and 2% sucrose. <i>Note that this product is shipped as lyophilized powder to China customers.</i>
Conjugation:	Unconjugated
Storage:	Store at -20°C as received.
Stability:	Stable for 12 months from date of receipt.
Predicted Protein Size:	53 kDa
Gene Name:	mitogen-activated protein kinase kinase kinase 8
Database Link:	NP_005195 Entrez Gene 1326 Human P41279



[View online »](#)

Background:

This gene is an oncogene that encodes a member of the serine/threonine protein kinase family. The encoded protein localizes to the cytoplasm and can activate both the MAP kinase and JNK kinase pathways. This protein was shown to activate I κ B kinases, and thus induce the nuclear production of NF- κ B. This protein was also found to promote the production of TNF- α and IL-2 during T lymphocyte activation. This gene may also utilize a downstream in-frame translation start codon, and thus produce an isoform containing a shorter N-terminus. The shorter isoform has been shown to display weaker transforming activity. Alternate splicing results in multiple transcript variants that encode the same protein. [provided by RefSeq, Sep 2011]

Synonyms:

AURA2; c-COT; COT; EST; ESTF; MEKK8; Tpl-2; TPL2

Note:

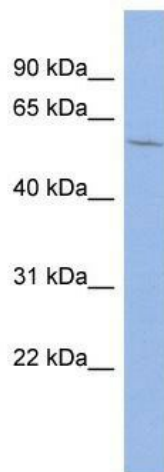
Immunogen sequence homology: Human: 100%; Horse: 87%; Mouse: 85%; Bovine: 75%

Protein Families:

Druggable Genome, Protein Kinase

Protein Pathways:

MAPK signaling pathway, T cell receptor signaling pathway, Toll-like receptor signaling pathway

Product images:

WB Suggested Anti-MAP3K8 Antibody Titration:
0.2-1 μ g/ml; ELISA Titer: 1:312500; Positive
Control: THP-1 cell lysate