

Product datasheet for **TA329164**

CLK4 Rabbit Polyclonal Antibody

Product data:

Product Type:	Primary Antibodies
Applications:	WB
Recommended Dilution:	WB
Reactivity:	Human
Host:	Rabbit
Isotype:	IgG
Clonality:	Polyclonal
Immunogen:	The immunogen for anti-CLK4 antibody: synthetic peptide directed towards the N terminal of human CLK4. Synthetic peptide located within the following region: RSRRSSPKRKRNRHCSSHQSRSKSHRRKRSRSIEDDEEGHLICQSGDVLR
Formulation:	Liquid. Purified antibody supplied in 1x PBS buffer with 0.09% (w/v) sodium azide and 2% sucrose. <i>Note that this product is shipped as lyophilized powder to China customers.</i>
Conjugation:	Unconjugated
Storage:	Store at -20°C as received.
Stability:	Stable for 12 months from date of receipt.
Predicted Protein Size:	57 kDa
Gene Name:	CDC like kinase 4
Database Link:	NP_065717 Entrez Gene 57396 Human Q9HAZ1
Background:	The protein encoded by this gene belongs to the CDC2-like protein kinase (CLK) family. This protein kinase can interact with and phosphorylate the serine- and arginine-rich (SR) proteins, which are known to play an important role in the formation of spliceosomes, and thus may be involved in the regulation of alternative splicing. Studies in the Israeli sand rat <i>Psammomys obesus</i> suggested that the ubiquitin-like 5 (UBL5/BEACON), a highly conserved ubiquitin-like protein, may interact with and regulate the activity of this kinase. Multiple alternatively spliced transcript variants have been observed, but the full-length nature of which have not yet been determined.



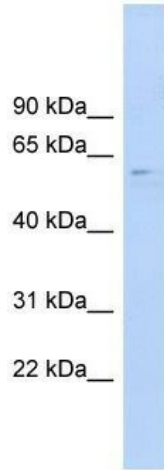
[View online »](#)

Synonyms: DKFZp686A20267

Note: Immunogen sequence homology: Dog: 100%; Pig: 100%; Human: 100%; Rabbit: 100%; Guinea pig: 100%; Rat: 93%; Horse: 93%; Bovine: 93%; Yeast: 91%; Mouse: 86%

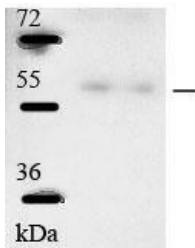
Protein Families: Druggable Genome, Protein Kinase

Product images:



WB Suggested Anti-CLK4 Antibody Titration: 0.2-1 ug/ml; ELISA Titer: 1:62500; Positive Control: Human brain

CLK4



Sample type: human microvascular endothelial cells (25ug); Primary Dilution: 1:1000; Secondary Antibody: Goat anti-Rabbit-HRP; Secondary Dilution: 1:5000; Image Submitted by: Andreas Eisenreich ; Charite Universitatsmedizin Berlin

See Immunoblot 2 Data for more information.