

Product datasheet for **TA329163**

p53 DINP1 (TP53INP1) Rabbit Polyclonal Antibody

Product data:

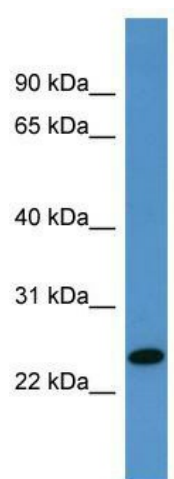
Product Type:	Primary Antibodies
Applications:	WB
Recommended Dilution:	WB
Reactivity:	Human
Host:	Rabbit
Isotype:	IgG
Clonality:	Polyclonal
Immunogen:	The immunogen for anti-TP53INP1 antibody: synthetic peptide directed towards the C terminal of human TP53INP1. Synthetic peptide located within the following region: SFRPSQWIKHEHSERQPLNRNSLRRQNLTRDCHPRQVKHNGWVWHQPCPRQ
Formulation:	Liquid. Purified antibody supplied in 1x PBS buffer with 0.09% (w/v) sodium azide and 2% sucrose. <i>Note that this product is shipped as lyophilized powder to China customers.</i>
Conjugation:	Unconjugated
Storage:	Store at -20°C as received.
Stability:	Stable for 12 months from date of receipt.
Predicted Protein Size:	27 kDa
Gene Name:	tumor protein p53 inducible nuclear protein 1
Database Link:	NP_150601 Entrez Gene 94241 Human Q96A56
Background:	In response to double-strand DNA breaks, TP53INP1 promotes p53/TP53 phosphorylation on 'Ser-46' and subsequent apoptosis. TP53INP1s and HIPK2 could be partners in regulating p53 activity. TP53INP1 plays a significant role in the progression of anaplastic carcinoma or contributes to anaplastic transformation from papillary or follicular carcinoma.
Synonyms:	p53DINP1; SIP; Teap; TP53DINP1; TP53INP1A; TP53INP1B
Note:	Immunogen sequence homology: Human: 100%; Pig: 93%; Rat: 93%; Horse: 93%; Bovine: 93%; Rabbit: 93%; Dog: 87%; Mouse: 87%; Guinea pig: 86%



[View online »](#)

Protein Families: Druggable Genome

Product images:



WB Suggested Anti-TP53INP1 Antibody Titration:
0.2-1 ug/ml; ELISA Titer: 1:62500; Positive Control:
MCF7 cell lysate