

Product datasheet for **TA329161**

DP2 (TFDP2) Rabbit Polyclonal Antibody

Product data:

Product Type:	Primary Antibodies
Applications:	WB
Recommended Dilution:	WB
Reactivity:	Human
Host:	Rabbit
Isotype:	IgG
Clonality:	Polyclonal
Immunogen:	The immunogen for Anti-TFDP2 antibody is: synthetic peptide directed towards the C-terminal region of Human TFDP2. Synthetic peptide located within the following region: SVNQGLCLDAEVALATGQFLAPNSHQSSSAASHCSESRGETPCSFNDEDE
Formulation:	Liquid. Purified antibody supplied in 1x PBS buffer with 0.09% (w/v) sodium azide and 2% sucrose. <i>Note that this product is shipped as lyophilized powder to China customers.</i>
Purification:	Affinity Purified
Conjugation:	Unconjugated
Storage:	Store at -20°C as received.
Stability:	Stable for 12 months from date of receipt.
Predicted Protein Size:	42 kDa
Gene Name:	transcription factor Dp-2
Database Link:	NP_006277 Entrez Gene 7029 Human Q14188
Background:	The gene is a member of the transcription factor DP family. The encoded protein forms heterodimers with the E2F transcription factors resulting in transcriptional activation of cell cycle regulated genes. Alternative splicing results in multiple transcript variants.
Synonyms:	DP2
Note:	Immunogen sequence homology: Dog: 100%; Pig: 100%; Rat: 100%; Horse: 100%; Human: 100%; Bovine: 100%; Mouse: 92%; Guinea pig: 92%; Rabbit: 85%

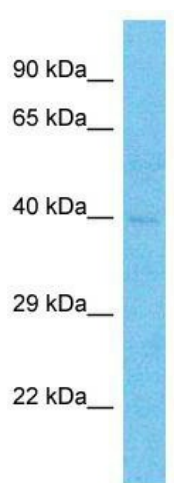


[View online »](#)

Protein Families: Druggable Genome, Transcription Factors

Protein Pathways: Cell cycle

Product images:



Host: Rabbit; Target Name: TFDP2; Sample Tissue: Thyroid Tumor lysates; Antibody Dilution: 1.0ug/ml