

Product datasheet for **TA329160**

Pdcd2 Rabbit Polyclonal Antibody

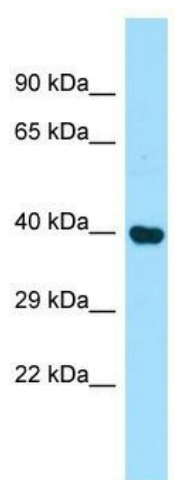
Product data:

Product Type:	Primary Antibodies
Applications:	WB
Recommended Dilution:	WB
Reactivity:	Rat
Host:	Rabbit
Isotype:	IgG
Clonality:	Polyclonal
Immunogen:	The immunogen for Anti-Pdcd2 antibody is: synthetic peptide directed towards the middle region of Rat Pdcd2. Synthetic peptide located within the following region: AGLRVFRNQLPRKNAFYSEPPSETGASDTECVCLQLKSGAHLRCRVCGCL
Formulation:	Liquid. Purified antibody supplied in 1x PBS buffer with 0.09% (w/v) sodium azide and 2% sucrose. <i>Note that this product is shipped as lyophilized powder to China customers.</i>
Conjugation:	Unconjugated
Storage:	Store at -20°C as received.
Stability:	Stable for 12 months from date of receipt.
Predicted Protein Size:	37 kDa
Gene Name:	programmed cell death 2
Database Link:	NP_113826 Entrez Gene 58934 Rat P47816
Background:	Pdcd2 may bind DNA and play a role in programmed cell death.
Synonyms:	MGC12347; RP8; ZMYND7
Note:	Immunogen sequence homology: Dog: 100%; Horse: 100%; Human: 100%; Rat: 93%; Bovine: 93%; Goat: 90%; Pig: 86%; Mouse: 86%; Rabbit: 86%; Zebrafish: 82%



[View online »](#)

Product images:



Host: Rabbit; Target Name: Pdcd2; Sample
Tissue: Rat Kidney lysates; Antibody Dilution:
1.0ug/ml