

Product datasheet for **TA329159**

HIF-1 alpha (HIF1A) Rabbit Polyclonal Antibody

Product data:

Product Type:	Primary Antibodies
Applications:	IHC, WB
Recommended Dilution:	WB
Reactivity:	Human
Host:	Rabbit
Isotype:	IgG
Clonality:	Polyclonal
Immunogen:	The immunogen for anti-HIF1A antibody: synthetic peptide directed towards the N terminal of human HIF1A. Synthetic peptide located within the following region: EGAGGANDKKKISSERRKEKSRDAARSRRSKESEVFYELAHQLPLPHNVS
Formulation:	Liquid. Purified antibody supplied in 1x PBS buffer with 0.09% (w/v) sodium azide and 2% sucrose. <i>Note that this product is shipped as lyophilized powder to China customers.</i>
Conjugation:	Unconjugated
Storage:	Store at -20°C as received.
Stability:	Stable for 12 months from date of receipt.
Predicted Protein Size:	83 kDa
Gene Name:	hypoxia inducible factor 1 alpha subunit
Database Link:	NP_851397 Entrez Gene 3091 Human Q16665
Background:	Hypoxia-inducible factor-1 (HIF1) is a transcription factor found in mammalian cells cultured under reduced oxygen tension that plays an essential role in cellular and systemic homeostatic responses to hypoxia. HIF1 is a heterodimer composed of an alpha subunit and a beta subunit. The beta subunit has been identified as the aryl hydrocarbon receptor nuclear translocator (ARNT). HIF1A is the alpha subunit of HIF-1. Overexpression of a natural antisense transcript (aHIF) of this gene has been shown to be associated with nonpapillary renal carcinomas. Two alternative transcripts encoding different isoforms have been identified.



[View online »](#)

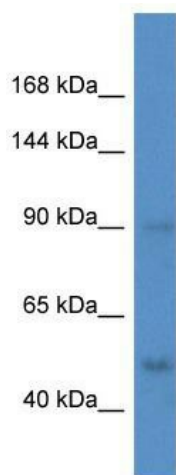
Synonyms: bHLHe78; HIF-1-alpha; HIF-1A; HIF-1alpha; HIF1; HIF1-ALPHA; MOP1; PASD8

Note: Immunogen sequence homology: Dog: 100%; Pig: 100%; Rat: 100%; Goat: 100%; Horse: 100%; Human: 100%; Yeast: 100%; Bovine: 100%; Rabbit: 100%; Guinea pig: 100%; Mouse: 87%; Zebrafish: 86%

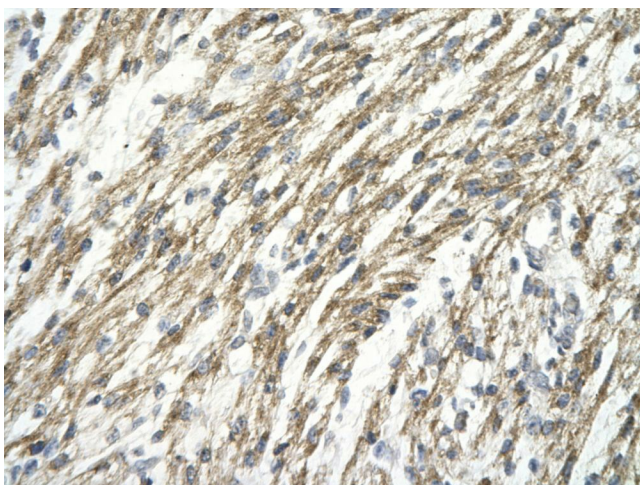
Protein Families: Transcription Factors

Protein Pathways: mTOR signaling pathway, Pathways in cancer, Renal cell carcinoma

Product images:



WB Suggested Anti-HIF1A Antibody; Titration: 1.0 ug/ml; Positive Control: Fetal Heart



Rabbit Anti-HIF1A antibody; Paraffin Embedded Tissue: Human Heart cell Cellular Data: cardiac cell of renal tubule; Antibody Concentration: 4.0-8.0 ug/ml; Magnification: 400X