

## Product datasheet for **TA329157**

### CCN1 (CYR61) Rabbit Polyclonal Antibody

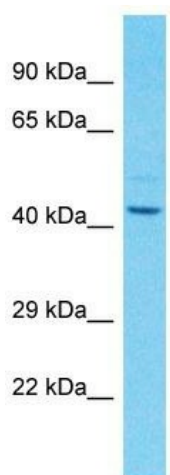
#### Product data:

Product Type:	Primary Antibodies
Applications:	WB
Recommended Dilution:	WB
Reactivity:	Human
Host:	Rabbit
Clonality:	Polyclonal
Immunogen:	The immunogen for Anti-CYR61 antibody is: synthetic peptide directed towards the middle region of Human CYR61. Synthetic peptide located within the following region: CEYNSRIYQNGESFQPNCXKHQCTCIDGAVGCIPLCPQELSLPNLGCPNPR
Formulation:	Liquid. Purified antibody supplied in 1x PBS buffer with 0.09% (w/v) sodium azide and 2% sucrose. <i>Note that this product is shipped as lyophilized powder to China customers.</i>
Conjugation:	Unconjugated
Storage:	Store at -20°C as received.
Stability:	Stable for 12 months from date of receipt.
Predicted Protein Size:	41 kDa
Gene Name:	cysteine rich angiogenic inducer 61
Database Link:	<a href="#">NP_001545</a> <a href="#">Entrez Gene 3491 Human</a> <a href="#">O00622</a>
Background:	The secreted protein encoded by this gene is growth factor-inducible and promotes the adhesion of endothelial cells. The encoded protein interacts with several integrins and with heparan sulfate proteoglycan. This protein also plays a role in cell proliferation, differentiation, angiogenesis, apoptosis, and extracellular matrix formation.
Synonyms:	CCN1; GIG1; IGFBP10
Note:	Immunogen sequence homology: Dog: 100%; Pig: 100%; Rat: 100%; Horse: 100%; Human: 100%; Mouse: 100%; Bovine: 100%; Rabbit: 100%; Guinea pig: 100%; Zebrafish: 93%
Protein Families:	Druggable Genome, ES Cell Differentiation/IPS, Secreted Protein



[View online »](#)

## Product images:



Host: Rabbit

Target Name: CYR61

Sample Tissue: COLO205 Cell Lysate

Antibody Dilution: 1.0 $\mu$ g/ml

Host: Rabbit; Target Name: CYR61; Sample  
Tissue: COLO205 Whole Cell lysates; Antibody  
Dilution: 3.0 $\mu$ g/ml