

Product datasheet for **TA329156**

TLR2 Rabbit Polyclonal Antibody

Product data:

Product Type:	Primary Antibodies
Applications:	IHC, WB
Recommended Dilution:	WB, IHC
Reactivity:	Human
Host:	Rabbit
Isotype:	IgG
Clonality:	Polyclonal
Immunogen:	The immunogen for anti-TLR2 antibody: synthetic peptide directed towards the C terminal of human TLR2. Synthetic peptide located within the following region: LEPIEKKAIPQRFCKLRKIMNTKTYLEWPMDEAQREGFWVNLRAAIKS
Formulation:	Liquid. Purified antibody supplied in 1x PBS buffer with 0.09% (w/v) sodium azide and 2% sucrose. <i>Note that this product is shipped as lyophilized powder to China customers.</i>
Conjugation:	Unconjugated
Storage:	Store at -20°C as received.
Stability:	Stable for 12 months from date of receipt.
Predicted Protein Size:	90 kDa
Gene Name:	toll like receptor 2
Database Link:	NP_003255 Entrez Gene 7097 Human O60603



[View online »](#)

Background:

TLR2 is a member of the Toll-like receptor (TLR) family which plays a fundamental role in pathogen recognition and activation of innate immunity. TLRs are highly conserved from *Drosophila* to humans and share structural and functional similarities. They recognize pathogen-associated molecular patterns (PAMPs) that are expressed on infectious agents, and mediate the production of cytokines necessary for the development of effective immunity. The various TLRs exhibit different patterns of expression. This gene is expressed most abundantly in peripheral blood leukocytes, and mediates host response to Gram-positive bacteria and yeast via stimulation of NF-kappaB. Publication Note: This RefSeq record includes a subset of the publications that are available for this gene. Please see the Entrez Gene record to access additional publications.

Synonyms:

CD282; TIL4

Note:

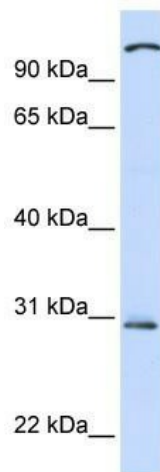
Immunogen sequence homology: Human: 100%; Zebrafish: 100%; Rat: 92%; Horse: 92%; Mouse: 91%; Sheep: 91%; Bovine: 91%; Dog: 85%; Goat: 85%; Pig: 79%; Guinea pig: 79%

Protein Families:

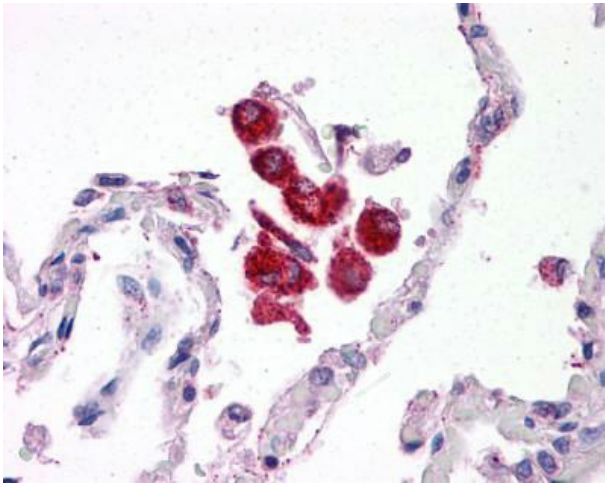
Druggable Genome, Transmembrane

Protein Pathways:

Toll-like receptor signaling pathway

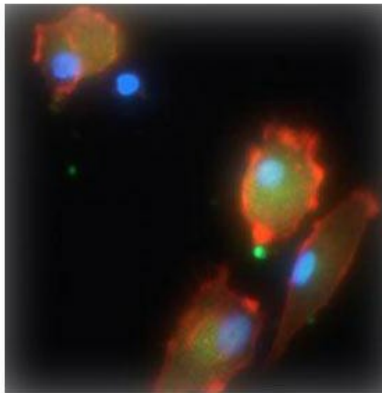
Product images:

TLR2 antibody - C-terminal region validated by WB using Fetal Brain Lysate at 1ug/ml.



IHC Information: Lung

TLR2

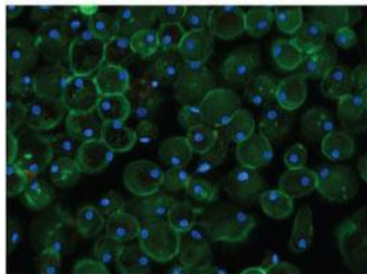


IHC Information: Human Liver: Formalin-Fixed, Paraffin-Embedded (FFPE)

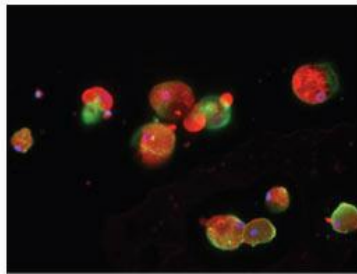
See Immunohistochemistry Data 1 for more information.

TLR2

SOD: -

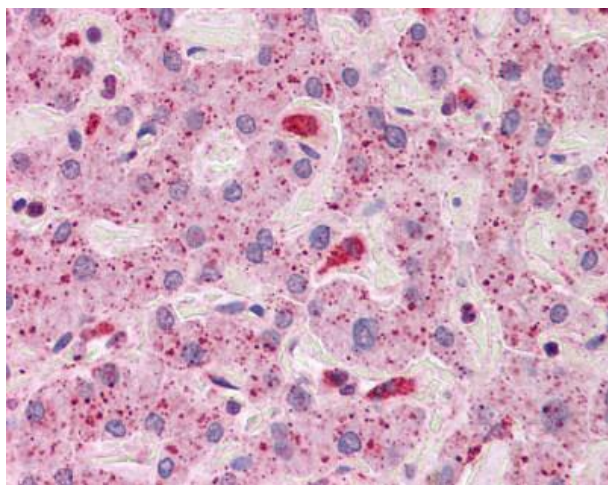


SOD: +

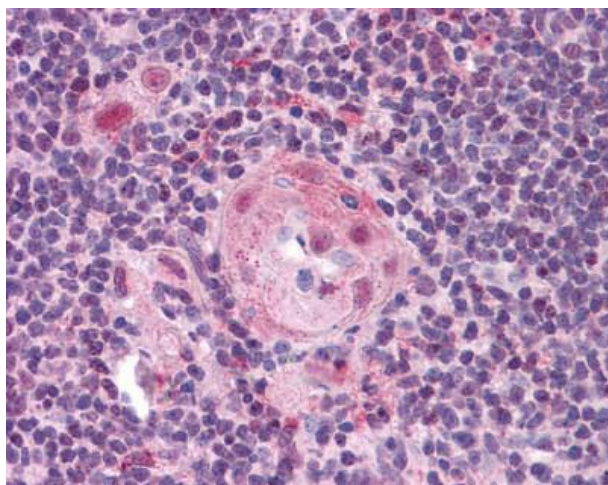


Sample Type: Human Macrophage Cells; Green: primary; Red: phalloidin; Blue: DAPI; Yellow: green/red; Primary Dilution: 1:200; Secondary Antibody: anti-Rabbit IgG-FITC; Secondary Dilution: 1:1000; Image Submitted By: Milan Fiala; University of California, Los Angeles

See Immunohistochemistry Data 1 for more information.



Immunohistochemistry with pFA fixed human thymus tissue



Immunohistochemistry with Liver tissue at an antibody concentration of 5.0ug/ml using anti-TLR2 antibody