

## Product datasheet for **TA329150**

### ETS1 Rabbit Polyclonal Antibody

#### Product data:

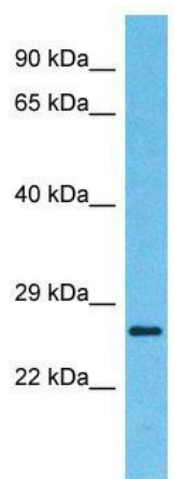
Product Type:	Primary Antibodies
Applications:	WB
Recommended Dilution:	WB
Reactivity:	Human
Host:	Rabbit
Isotype:	IgG
Clonality:	Polyclonal
Immunogen:	The immunogen for Anti-ETS1 antibody is: synthetic peptide directed towards the middle region of Human ETS1. Synthetic peptide located within the following region: FQKFCMNGAALCALGKDCFLELAPDFVGDILWEHLEILQKEDVKPYQVNG
Formulation:	Liquid. Purified antibody supplied in 1x PBS buffer with 0.09% (w/v) sodium azide and 2% sucrose. <i>Note that this product is shipped as lyophilized powder to China customers.</i>
Purification:	Affinity Purified
Conjugation:	Unconjugated
Storage:	Store at -20°C as received.
Stability:	Stable for 12 months from date of receipt.
Predicted Protein Size:	29 kDa
Gene Name:	ETS proto-oncogene 1, transcription factor
Database Link:	<a href="#">NP_005229</a> <a href="#">Entrez Gene 2113 Human</a> <a href="#">P14921</a>
Background:	The function of this protein remains unknown.
Synonyms:	ETS-1; EWSR2; p54
Note:	Immunogen sequence homology: Dog: 100%; Pig: 100%; Rat: 100%; Goat: 100%; Horse: 100%; Human: 100%; Mouse: 100%; Bovine: 100%; Rabbit: 100%; Guinea pig: 92%
Protein Families:	Druggable Genome, Transcription Factors



[View online »](#)

Protein Pathways: Dorso-ventral axis formation, Pathways in cancer, Renal cell carcinoma

### Product images:



Host: Rabbit; Target Name: ETS1; Sample Tissue: Thyroid tumor lysates; Antibody Dilution: 1.0ug/ml