

Product datasheet for **TA329149**

Bcl2l2 Rabbit Polyclonal Antibody

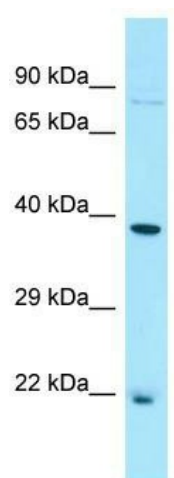
Product data:

Product Type:	Primary Antibodies
Applications:	WB
Recommended Dilution:	WB
Reactivity:	Mouse
Host:	Rabbit
Isotype:	IgG
Clonality:	Polyclonal
Immunogen:	The immunogen for Anti-Bcl2l2 antibody is: synthetic peptide directed towards the C-terminal region of Mouse Bcl2l2. Synthetic peptide located within the following region: VQDWMVAYLETRLADWIHSSGGWAEFTALYGDGALEEARRLREGNWASVR
Formulation:	Liquid. Purified antibody supplied in 1x PBS buffer with 0.09% (w/v) sodium azide and 2% sucrose. <i>Note that this product is shipped as lyophilized powder to China customers.</i>
Conjugation:	Unconjugated
Storage:	Store at -20°C as received.
Stability:	Stable for 12 months from date of receipt.
Predicted Protein Size:	21 kDa
Gene Name:	BCL2-like 2
Database Link:	NP_031563 Entrez Gene 12050 Mouse P70345
Background:	Bcl2l2 promotes cell survival. It blocks dexamethasone-induced apoptosis and mediates survival of postmitotic Sertoli cells by suppressing death-promoting activity of BAX.
Synonyms:	BCL-W; Bcl2-L-2; BCLW; KIAA0271
Note:	Immunogen sequence homology: Dog: 100%; Pig: 100%; Rat: 100%; Horse: 100%; Human: 100%; Mouse: 100%; Bovine: 100%; Guinea pig: 100%; Rabbit: 93%



[View online »](#)

Product images:



WB Suggested Anti-Bcl2l2 Antibody; Titration: 1.0 ug/ml; Positive Control: Mouse Testis