

Product datasheet for **TA329148**

Integrin Linked Kinase (ILK) Rabbit Polyclonal Antibody

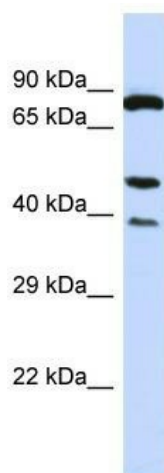
Product data:

Product Type:	Primary Antibodies
Applications:	WB
Recommended Dilution:	WB
Reactivity:	Human, Mouse
Host:	Rabbit
Isotype:	IgG
Clonality:	Polyclonal
Immunogen:	The immunogen for Anti-ILK antibody is: synthetic peptide directed towards the C-terminal region of Human ILK. Synthetic peptide located within the following region: MKVALEGLRPTIPPGISPHVCKLMKICMNEDPAKRPKFDMIVPILEKMQD
Formulation:	Liquid. Purified antibody supplied in 1x PBS buffer with 0.09% (w/v) sodium azide and 2% sucrose. <i>Note that this product is shipped as lyophilized powder to China customers.</i>
Purification:	Affinity Purified
Conjugation:	Unconjugated
Storage:	Store at -20°C as received.
Stability:	Stable for 12 months from date of receipt.
Predicted Protein Size:	49 kDa
Gene Name:	integrin linked kinase
Database Link:	NP_004508 Entrez Gene 16202 Mouse Entrez Gene 3611 Human Q13418



[View online »](#)

Background:	Transduction of extracellular matrix signals through integrins influences intracellular and extracellular functions, and appears to require interaction of integrin cytoplasmic domains with cellular proteins. Integrin-linked kinase (ILK), interacts with the cytoplasmic domain of beta-1 integrin. This gene encodes a serine/threonine protein kinase with 4 ankyrin-like repeats, which associates with the cytoplasmic domain of beta integrins and acts as a proximal receptor kinase regulating integrin-mediated signal transduction. Multiple alternatively spliced transcript variants encoding the same protein have been found for this gene.
Synonyms:	HEL-S-28; ILK-1; ILK-2; P59; p59ILK
Note:	Immunogen sequence homology: Dog: 100%; Pig: 100%; Rat: 100%; Horse: 100%; Human: 100%; Mouse: 100%; Sheep: 100%; Bovine: 100%; Rabbit: 100%; Zebrafish: 100%; Guinea pig: 100%; Goat: 82%
Protein Families:	Druggable Genome, Protein Kinase
Protein Pathways:	Endometrial cancer, Focal adhesion, PPAR signaling pathway

Product images:

Host: Rabbit; Target Name: ILK; Sample Tissue: Jurkat Whole Cell lysates; Antibody Dilution: 1.0ug/ml