

Product datasheet for **TA329147**

beta 1 Adrenergic Receptor (ADRB1) Rabbit Polyclonal Antibody

Product data:

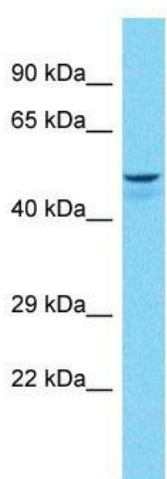
Product Type:	Primary Antibodies
Applications:	WB
Recommended Dilution:	WB
Reactivity:	Human
Host:	Rabbit
Clonality:	Polyclonal
Immunogen:	The immunogen for Anti-ADRB1 antibody is: synthetic peptide directed towards the C-terminal region of Human ADRB1. Synthetic peptide located within the following region: SDDDDDDVVGATPPARLLEPWAGCNGGAAADSDSSLDEPCRPGFAESKV
Formulation:	Liquid. Purified antibody supplied in 1x PBS buffer with 0.09% (w/v) sodium azide and 2% sucrose. <i>Note that this product is shipped as lyophilized powder to China customers.</i>
Conjugation:	Unconjugated
Storage:	Store at -20°C as received.
Stability:	Stable for 12 months from date of receipt.
Predicted Protein Size:	52 kDa
Gene Name:	adrenoceptor beta 1
Database Link:	NP_000675 Entrez Gene 153 Human P08588
Background:	ADRB1 is a beta-adrenergic receptors mediate the catecholamine-induced activation of adenylate cyclase through the action of G proteins. This receptor binds epinephrine and norepinephrine with approximately equal affinity. It mediates Ras activation through G(s)-alpha- and cAMP-mediated signaling.
Synonyms:	ADRB1R; B1AR; BETA1AR; RHR
Note:	Immunogen sequence homology: Human: 100%; Rabbit: 91%
Protein Families:	Druggable Genome, GPCR, Transmembrane



[View online »](#)

Protein Pathways: Calcium signaling pathway, Dilated cardiomyopathy, Endocytosis, Gap junction, Neuroactive ligand-receptor interaction

Product images:



Host: Rabbit
Target Name: ADRB1
Sample Tissue: THP-1 Cell Lysate
Antibody Dilution: 1.0µg/ml

Host: Rabbit; Target Name: ADRB1; Sample Tissue: THP-1 Whole Cell lysates; Antibody Dilution: 3.0ug/ml