

## Product datasheet for **TA329145**

### TRAF6 Rabbit Polyclonal Antibody

#### Product data:

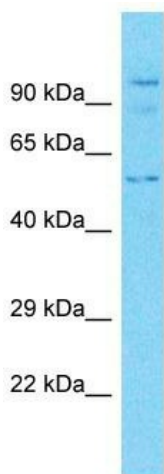
Product Type:	Primary Antibodies
Applications:	WB
Recommended Dilution:	WB
Reactivity:	Human, Mouse
Host:	Rabbit
Clonality:	Polyclonal
Immunogen:	The immunogen for Anti-TRAF6 antibody is: synthetic peptide directed towards the C-terminal region of Human TRAF6. Synthetic peptide located within the following region: FGYVTFMHLEALRQRTFIKDDTLLVRCEVSTRFDMGSLRREGFQPRSTDA
Formulation:	Liquid. Purified antibody supplied in 1x PBS buffer with 0.09% (w/v) sodium azide and 2% sucrose. <i>Note that this product is shipped as lyophilized powder to China customers.</i>
Conjugation:	Unconjugated
Storage:	Store at -20°C as received.
Stability:	Stable for 12 months from date of receipt.
Predicted Protein Size:	57 kDa
Gene Name:	TNF receptor associated factor 6
Database Link:	<a href="#">NP_004611</a> <a href="#">Entrez Gene 22034 Mouse</a> <a href="#">Entrez Gene 7189 Human</a> <a href="#">Q9Y4K3</a>
Background:	TRAF6 is an E3 ubiquitin ligase that, together with UBE2N and UBE2V1, mediates the synthesis of 'Lys-63'-linked-polyubiquitin chains conjugated to proteins, such as IKBKG, AKT1 and AKT2. It also mediates ubiquitination of free/unanchored polyubiquitin chain that leads to MAP3K7 activation. Leads to the activation of NF-kappa-B and JUN. It may be essential for the formation of functional osteoclasts. It seems to also play a role in dendritic cells (DCs) maturation and/or activation. It represses c-Myb-mediated transactivation, in B-lymphocytes. Adapter protein that seems to play a role in signal transduction initiated via TNF receptor, IL-1 receptor and IL-17 receptor. It regulates osteoclast differentiation by mediating the activation of adapter protein complex 1 (AP-1) and NF-kappa-B, in response to RANK-L stimulation.



[View online »](#)

<b>Synonyms:</b>	MGC:3310; RNF85
<b>Note:</b>	Immunogen sequence homology: Pig: 100%; Rat: 100%; Horse: 100%; Human: 100%; Bovine: 100%; Rabbit: 100%; Mouse: 91%
<b>Protein Families:</b>	Druggable Genome
<b>Protein Pathways:</b>	Endocytosis, MAPK signaling pathway, Neurotrophin signaling pathway, NOD-like receptor signaling pathway, Pathways in cancer, RIG-I-like receptor signaling pathway, Small cell lung cancer, Toll-like receptor signaling pathway, Ubiquitin mediated proteolysis

### Product images:



Host: Rabbit  
Target Name: TRAF6  
Sample Tissue: PANC1 Cell Lysate  
Antibody Dilution: 1.0 $\mu$ g/ml

Host: Rabbit; Target Name: TRAF6; Sample Tissue: PANC1 Whole Cell lysates; Antibody Dilution: 3.0 $\mu$ g/ml