

Product datasheet for **TA329144**

TYK2 Rabbit Polyclonal Antibody

Product data:

Product Type:	Primary Antibodies
Applications:	WB
Recommended Dilution:	WB
Reactivity:	Human
Host:	Rabbit
Isotype:	IgG
Clonality:	Polyclonal
Immunogen:	The immunogen for anti-TYK2 antibody: synthetic peptide directed towards the C terminal of human TYK2. Synthetic peptide located within the following region: HRDLAARNVLLDNDRLVKIGDFGLAKAVPEGHEYRVREDGDSPVFWYAP
Formulation:	Liquid. Purified antibody supplied in 1x PBS buffer with 0.09% (w/v) sodium azide and 2% sucrose. <i>Note that this product is shipped as lyophilized powder to China customers.</i>
Conjugation:	Unconjugated
Storage:	Store at -20°C as received.
Stability:	Stable for 12 months from date of receipt.
Predicted Protein Size:	134 kDa
Gene Name:	tyrosine kinase 2
Database Link:	NP_003322 Entrez Gene 7297 Human P29597
Background:	This gene encodes a member of the tyrosine kinase and, more specifically, the Janus kinases (JAKs) protein families. This protein associates with the cytoplasmic domain of type I and type II cytokine receptors and promulgate cytokine signals by phosphorylating receptor subunits. It is also component of both the type I and type III interferon signaling pathways. As such, it may play a role in anti-viral immunity. A mutation in this gene has been associated with hyperimmunoglobulin E syndrome (HIES) - a primary immunodeficiency characterized by elevated serum immunoglobulin E.



[View online »](#)

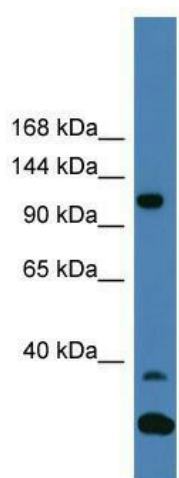
Synonyms: IMD35; JTK1

Note: Immunogen sequence homology: Dog: 100%; Rat: 100%; Horse: 100%; Human: 100%; Mouse: 100%; Pig: 91%; Bovine: 91%; Guinea pig: 91%

Protein Families: Druggable Genome, Protein Kinase

Protein Pathways: Jak-STAT signaling pathway

Product images:



WB Suggested Anti-TYK2 Antibody Titration: 0.2-1 ug/ml; ELISA Titer: 1:312500; Positive Control: COLO205 cell lysate