

## Product datasheet for **TA329143**

### **PDPK1 Rabbit Polyclonal Antibody**

#### **Product data:**

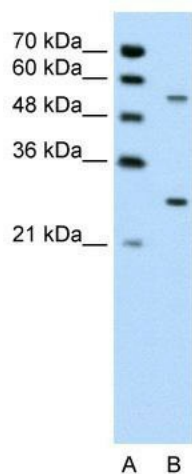
|                                |   |
|--------------------------------|---|
| <b>Product Type:</b>           | Primary Antibodies  |
| <b>Applications:</b>           | WB  |
| <b>Recommended Dilution:</b>   | WB  |
| <b>Reactivity:</b>             | Human   |
| <b>Host:</b>                   | Rabbit  |
| <b>Isotype:</b>                | IgG   |
| <b>Clonality:</b>              | Polyclonal  |
| <b>Immunogen:</b>              | The immunogen for anti-PDPK1 antibody: synthetic peptide directed towards the middle region of human PDPK1. Synthetic peptide located within the following region:<br>IIHRDLKPENILLNEDMHIQITDFGTAKVLSPEKQARANSFVGTAQYVS |
| <b>Formulation:</b>            | Liquid. Purified antibody supplied in 1x PBS buffer with 0.09% (w/v) sodium azide and 2% sucrose.<br><i>Note that this product is shipped as lyophilized powder to China customers.</i>                                 |
| <b>Conjugation:</b>            | Unconjugated  |
| <b>Storage:</b>                | Store at -20°C as received.   |
| <b>Stability:</b>              | Stable for 12 months from date of receipt.  |
| <b>Predicted Protein Size:</b> | 63 kDa  |
| <b>Gene Name:</b>              | 3-phosphoinositide dependent protein kinase 1   |
| <b>Database Link:</b>          | <a href="#">NP_002604</a><br><a href="#">Entrez Gene 5170 Human</a><br><a href="#">O15530</a>   |
| <b>Background:</b>             | PDPK1 phosphorylates and activates not only PKB/AKT, but also PKA, PKC-zeta, RPS6KA1 and RPS6KB1. It may play a general role in signaling processes and in development.   |
| <b>Synonyms:</b>               | PDK1; PDPK2; PDPK2P; PRO0461  |
| <b>Note:</b>                   | Immunogen sequence homology: Dog: 100%; Pig: 100%; Rat: 100%; Horse: 100%; Human: 100%; Mouse: 100%; Bovine: 100%; Rabbit: 100%; Zebrafish: 100%; Guinea pig: 100%  |
| <b>Protein Families:</b>       | Druggable Genome, Protein Kinase  |



[View online »](#)

**Protein Pathways:** Endometrial cancer, Focal adhesion, Insulin signaling pathway, mTOR signaling pathway, Non-small cell lung cancer, PPAR signaling pathway, Prostate cancer

**Product images:**



WB Suggested Anti-PDPK1 Antibody Titration: 0.2-1 ug/ml; ELISA Titer: 1:312500; Positive Control: Jurkat cell lysate