

## Product datasheet for **TA329139**

### Amphiregulin (AREG) Rabbit Polyclonal Antibody

#### Product data:

Product Type:	Primary Antibodies
Applications:	WB
Recommended Dilution:	WB
Reactivity:	Human
Host:	Rabbit
Isotype:	IgG
Clonality:	Polyclonal
Immunogen:	The immunogen for anti-AREG antibody: synthetic peptide directed towards the middle region of human AREG. Synthetic peptide located within the following region: PQIPGYIVDDSVRVEQVVKPPQNKTESENTSDKPKRKKKGGKNGKNRRNR
Formulation:	Liquid. Purified antibody supplied in 1x PBS buffer with 0.09% (w/v) sodium azide and 2% sucrose. <i>Note that this product is shipped as lyophilized powder to China customers.</i>
Conjugation:	Unconjugated
Storage:	Store at -20°C as received.
Stability:	Stable for 12 months from date of receipt.
Predicted Protein Size:	28 kDa
Gene Name:	amphiregulin
Database Link:	<a href="#">NP_001648</a> <a href="#">Entrez Gene 374 Human P15514</a>
Background:	The protein encoded by this gene is a member of the epidermal growth factor family. It is an autocrine growth factor as well as a mitogen for astrocytes, Schwann cells, and fibroblasts. It is related to epidermal growth factor (EGF) and transforming growth factor alpha (TGF-alpha). This protein interacts with the EGF/TGF-alpha receptor to promote the growth of normal epithelial cells and inhibits the growth of certain aggressive carcinoma cell lines. This encoded protein is associated with a psoriasis-like skin phenotype.
Synonyms:	AR; AREGB; CRDGF; SDGF



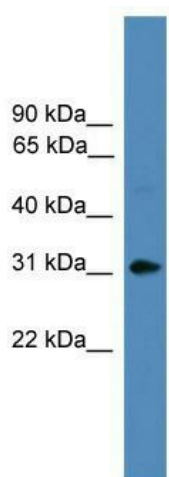
[View online »](#)

**Note:** Immunogen sequence homology: Human: 100%; Dog: 91%; Pig: 91%; Horse: 91%; Sheep: 91%; Bovine: 91%

**Protein Families:** Druggable Genome, Transmembrane

**Protein Pathways:** ErbB signaling pathway

**Product images:**



WB Suggested Anti-AREG Antibody Titration: 0.2-1 ug/ml; ELISA Titer: 1:62500; Positive Control: ACHN cell lysate